

# CLEC4G antibody

Catalog Number: 109385

## Product name

CLEC4G antibody

## Specificity

Human; other species not tested.

## Antibody description

CLEC4G Rabbit Polyclonal antibody. Positive WB detected in HUVEC cells, Transfected HEK-293 cells. Observed molecular weight by Western-blot: 40 kDa

## Preparation

This antibody was obtained by immunization of CLEC4G recombinant protein (Accession Number: NM\_198492). Purification method: Antigen affinity purified.

## Formulation

PBS with 0.02% sodium azide and 50% glycerol pH 7.3.

## Storage

Store at -20°C. DO NOT ALIQUOT

## Clonality

Polyclonal

## Ig Type

Rabbit IgG

## Applications

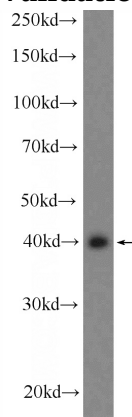
ELISA, WB

## Dilutions

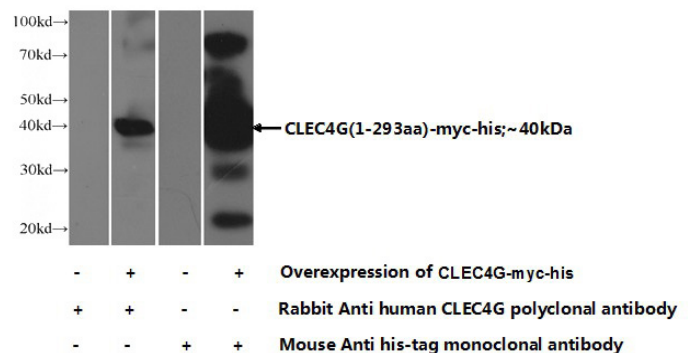
Recommended Dilution:

WB: 1:200-1:1000

## Validations



HUVEC cells were subjected to SDS PAGE followed by western blot with Catalog No:109385(CLEC4G Antibody) at dilution of 1:300



Transfected HEK-293 cells were subjected to SDS PAGE followed by western blot with Catalog No:109385 (CLEC4G Antibody) at dilution of 1:1000