

Claspin antibody

Catalog Number: 109335

Product name

Claspin antibody

IP: 1:500-1:5000

IF: 1:20-1:200

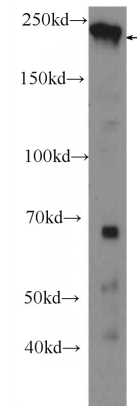
Specificity

Human; other species not tested.

Validations

Antibody description

Claspin Rabbit Polyclonal antibody. Positive WB detected in HEK-293 cells. Positive IP detected in HEK-293 cells. Positive IF detected in HepG2 cells, HeLa cells. Observed molecular weight by Western-blot: 240 kDa



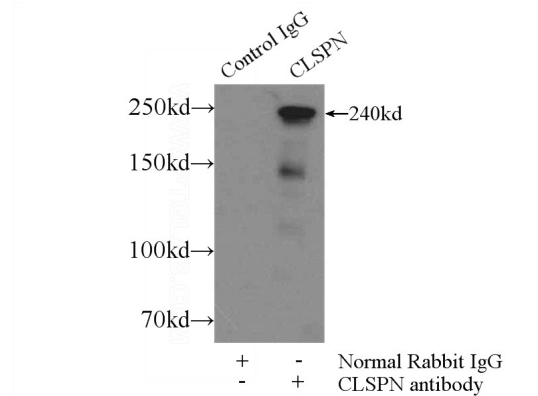
Preparation

This antibody was obtained by immunization of Claspin recombinant protein (Accession Number: NM_022111). Purification method: Antigen Affinity purified.

HEK-293 cells were subjected to SDS PAGE followed by western blot with Catalog No:109335(CLSPN Antibody) at dilution of 1:300

Formulation

PBS with 0.02% sodium azide and 50% glycerol pH 7.3.



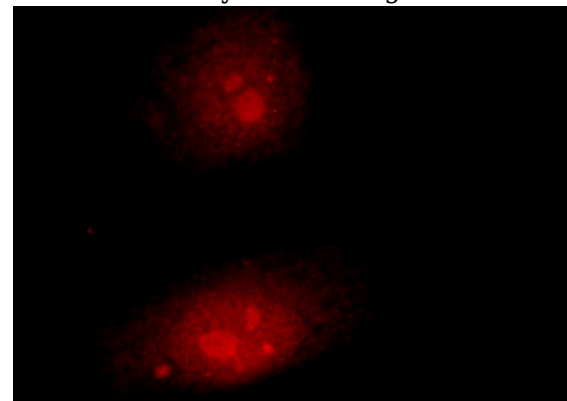
Storage

Store at -20°C. DO NOT ALIQUOT

IP Result of anti-CLSPN (IP:Catalog No:109335, 5ug; Detection:Catalog No:109335 1:1000) with HEK-293 cells lysate 2400ug.

Clonality

Polyclonal



Ig Type

Rabbit IgG

Applications

ELISA, WB, IF, IP

Dilutions

Recommended Dilution:

WB: 1:200-1:1000

Immunofluorescent analysis of HepG2 cells using Catalog No:109335(CLSPN Antibody) at dilution

Claspin antibody



Catalog Number: 109335

of 1:50 and Rhodamine-Goat anti-Rabbit IgG