

Cirhin antibody



Catalog Number: 109320

Product name

Cirhin antibody

Specificity

Human, Mouse, Rat; other species not tested.

Antibody description

Cirhin Rabbit Polyclonal antibody. Positive WB detected in SH-SY5Y cells, HepG2 cells, Neuro-2a cells. Observed molecular weight by Western-blot: 70-77 kDa

Preparation

This antibody was obtained by immunization of Cirhin recombinant protein (Accession Number: NM_032830). Purification method: Antigen affinity purified.

Formulation

PBS with 0.1% sodium azide and 50% glycerol pH 7.3.

Storage

Store at -20°C. DO NOT ALIQUOT

Clonality

Polyclonal

Ig Type

Rabbit IgG

Applications

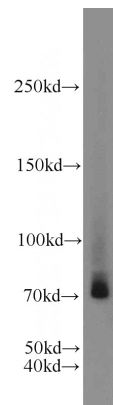
ELISA, WB

Dilutions

Recommended Dilution:

WB: 1:500-1:5000

Validations



SH-SY5Y cells were subjected to SDS PAGE followed by western blot with Catalog No:109320(CIRH1A antibody) at dilution of 1:1000