

CIAPIN1 antibody



Catalog Number: 109310

Product name

ELISA, WB, IF

CIAPIN1 antibody

Dilutions

Immunogen

Recommended Dilution:

[Human CIAPIN1 Recombinant protein \(GST tag\)](#)

WB: 1:500-1:5000

Specificity

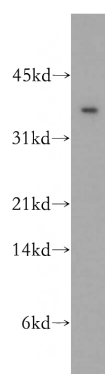
IF: 1:10-1:100

Human, Mouse, Rat; other species not tested.

Validations

Antibody description

CIAPIN1 Rabbit Polyclonal antibody. Positive WB detected in mouse liver tissue, HeLa cells, human brain tissue. Positive IF detected in HeLa cells. Observed molecular weight by Western-blot: 34kd



Preparation

This antibody was obtained by immunization of CIAPIN1 recombinant protein (Accession Number: NM_020313). Purification method: Antigen affinity purified.

mouse liver tissue were subjected to SDS PAGE followed by western blot with Catalog No:109310(CIAPIN1 antibody) at dilution of 1:400

Formulation

PBS with 0.02% sodium azide and 50% glycerol pH 7.3.

Storage

Store at -20°C. DO NOT ALIQUOT

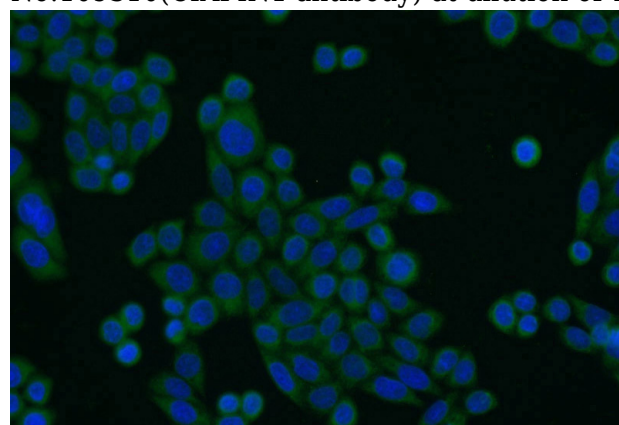
Clonality

Polyclonal

Ig Type

Rabbit IgG

Applications



Immunofluorescent analysis of HeLa cells using Catalog No:109310(CIAPIN1 Antibody) at dilution of 1:25 and Alexa Fluor 488-conjugated AffiniPure Goat Anti-Rabbit IgG(H+L)