

Chymotrypsin like protease antibody



Catalog Number: 109306

Product name

Chymotrypsin like protease antibody

IHC: 1:20-1:200

IF: 1:10-1:100

Specificity

Human, Mouse, Rat; other species not tested.

Antibody description

Chymotrypsin like protease Rabbit Polyclonal antibody. Positive WB detected in mouse pancreas tissue, BxPC-3 cells. Positive IHC detected in human pancreas tissue. Positive IF detected in BxPC-3 cells. Observed molecular weight by Western-blot: 25-28kd

Preparation

This antibody was obtained by immunization of Chymotrypsin like protease recombinant protein (Accession Number: NM_001907). Purification method: Antigen affinity purified.

Formulation

PBS with 0.02% sodium azide and 50% glycerol pH 7.3.

Storage

Store at -20°C. DO NOT ALIQUOT

Clonality

Polyclonal

Ig Type

Rabbit IgG

Applications

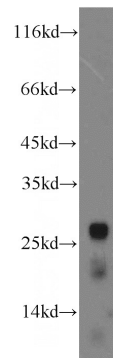
ELISA, WB, IHC, IF

Dilutions

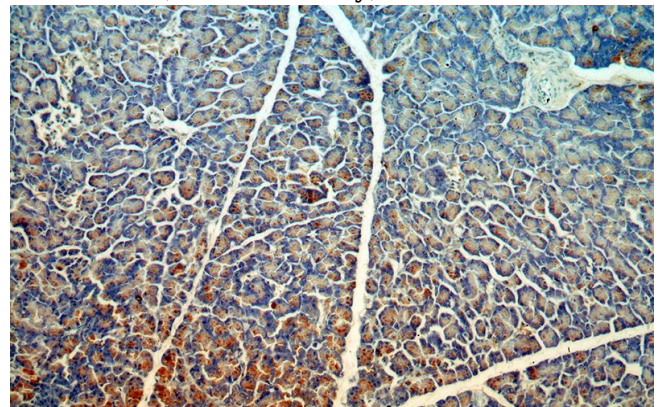
Recommended Dilution:

WB: 1:1000-1:10000

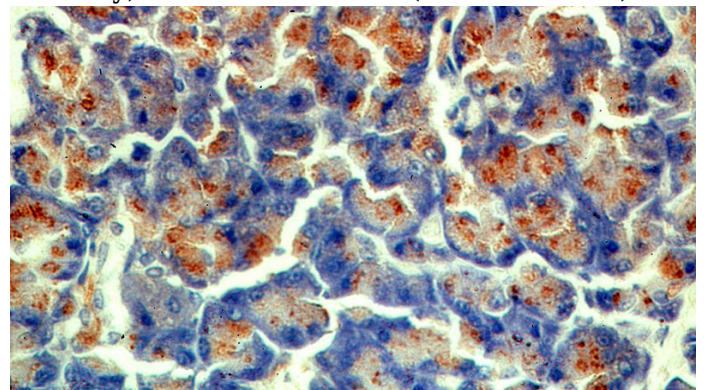
Validations



mouse pancreas tissue were subjected to SDS PAGE followed by western blot with Catalog No:109306(CTRL antibody) at dilution of 1:3000



Immunohistochemical of paraffin-embedded human pancreas using Catalog No:109306(CTRL antibody) at dilution of 1:100 (under 10x lens)



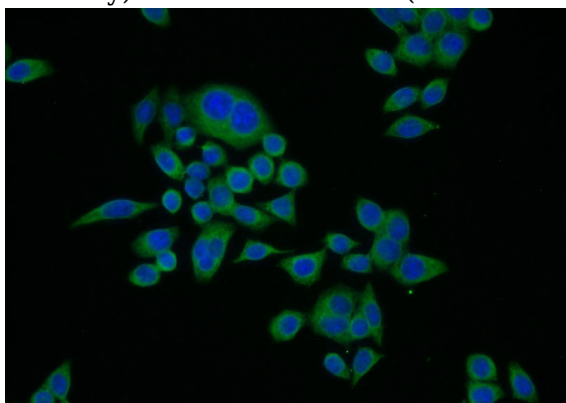
Immunohistochemical of paraffin-embedded human pancreas using Catalog No:109306(CTRL

Chymotrypsin like protease antibody



Catalog Number: 109306

antibody) at dilution of 1:100 (under 40x lens)



Immunofluorescent analysis of BxPC-3 cells using Catalog No:109306(CTRL Antibody) at dilution of 1:25 and Alexa Fluor 488-conjugated AffiniPure Goat Anti-Rabbit IgG(H+L)