

# CHT1 antibody



Catalog Number: 109302

## Product name

CHT1 antibody

## Immunogen

[Human SLC5A7 Recombinant protein \(GST tag\)](#)

## Specificity

Human, Mouse, Rat; other species not tested.

## Antibody description

CHT1 Rabbit Polyclonal antibody. Positive IP detected in mouse heart tissue. Positive WB detected in mouse brain tissue. Positive IHC detected in human brain tissue. Observed molecular weight by Western-blot: 65-70 kDa

## Preparation

This antibody was obtained by immunization of CHT1 recombinant protein (Accession Number: XM\_047445369). Purification method: Antigen affinity purified.

## Formulation

PBS with 0.02% sodium azide and 50% glycerol pH 7.3.

## Storage

Store at -20°C. DO NOT ALIQUOT

## Clonality

Polyclonal

## Ig Type

Rabbit IgG

## Applications

ELISA, WB, IHC, IP

## Dilutions

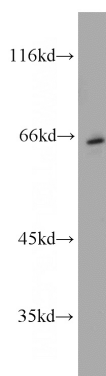
Recommended Dilution:

WB: 1:200-1:1000

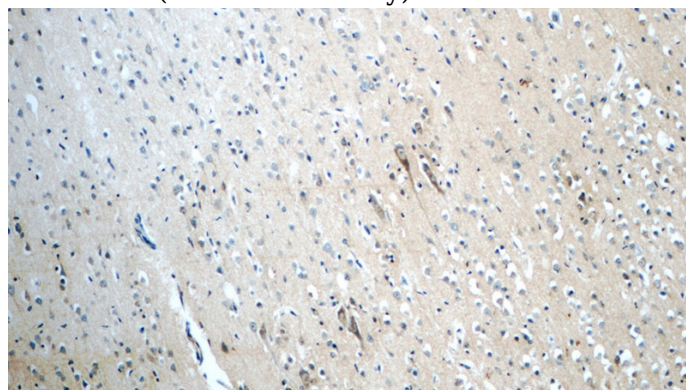
IP: 1:200-1:2000

IHC: 1:20-1:200

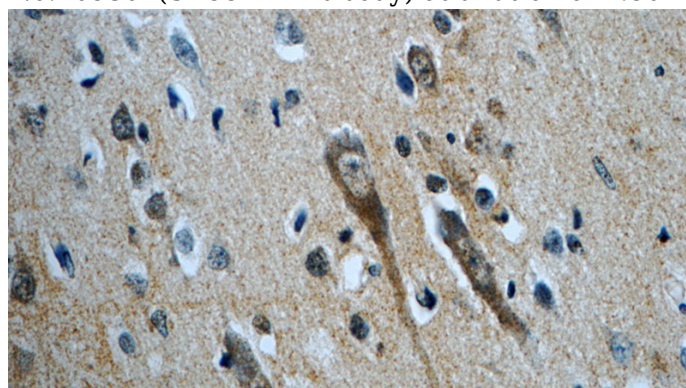
## Validations



mouse brain tissue were subjected to SDS PAGE followed by western blot with Catalog No:109302(SLC5A7 antibody) at dilution of 1:300



Immunohistochemistry of paraffin-embedded human brain slide using Catalog No:109302(SLC5A7 Antibody) at dilution of 1:50



# CHT1 antibody



Catalog Number: 109302

---

Immunohistochemistry of paraffin-embedded human brain slide using Catalog No:109302(SLC5A7 Antibody) at dilution of 1:50

IP Result of anti-SLC5A7 (IP:Catalog No:109302, 4ug; Detection:Catalog No:109302 1:500) with mouse heart tissue lysate 4000ug.

