

CHRNA1 antibody



Catalog Number: 109277

Product name

CHRNA1 antibody

IHC: 1:20-1:200

IF: 1:50-1:500

Specificity

Human, Mouse, Rat; other species not tested.

Antibody description

CHRNA1 Rabbit Polyclonal antibody. Positive IHC detected in human skeletal muscle tissue, human heart tissue. Positive IF detected in C2C12 cell. Positive WB detected in mouse heart tissue, rat brain tissue. Observed molecular weight by Western-blot: 54 kDa

Preparation

This antibody was obtained by immunization of CHRNA1 recombinant protein (Accession Number: BC006314). Purification method: Antigen affinity purified.

Formulation

PBS with 0.1% sodium azide and 50% glycerol pH 7.3.

Storage

Store at -20°C. DO NOT ALIQUOT

Clonality

Polyclonal

Ig Type

Rabbit IgG

Applications

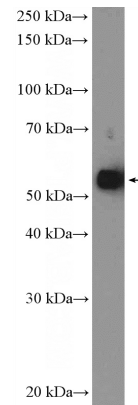
ELISA, IHC, WB, IF

Dilutions

Recommended Dilution:

WB: 1:200-1:1000

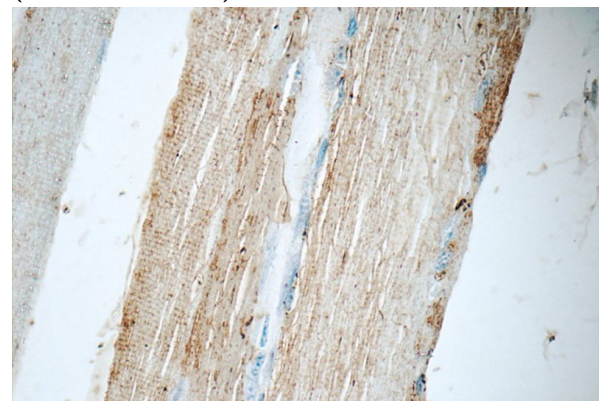
Validations



mouse heart tissue were subjected to SDS PAGE followed by western blot with Catalog No:109277(CHRNA1 Antibody) at dilution of 1:300



Immunohistochemistry of paraffin-embedded human skeletal muscle tissue slide using Catalog No:109277(CHRNA1 Antibody) at dilution of 1:50 (under 10x lens)



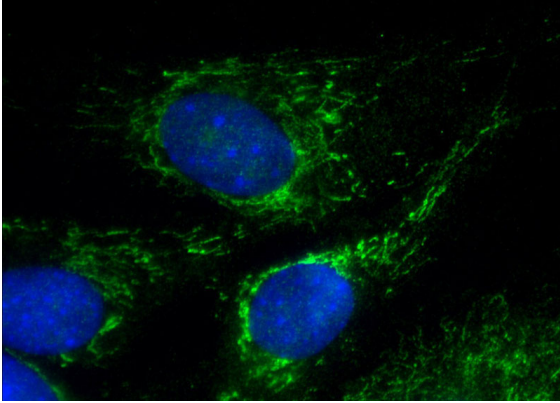
Immunohistochemistry of paraffin-embedded

CHRNA1 antibody



Catalog Number: 109277

human skeletal muscle tissue slide using Catalog No:109277(CHRNA1 Antibody) at dilution of 1:50 (under 40x lens)



Immunofluorescent analysis of (-20oc Ethanol) fixed C2C12 cell using Catalog No:109277(CHRNA1 Antibody) at dilution of 1:50 and Alexa Fluor 488-conjugated AffiniPure Goat Anti-Rabbit IgG(H+L)