

CEP164 antibody

Catalog Number: 109267

Product name

CEP164 antibody

IP: 1:500-1:2000

IHC: 1:20-1:200

Specificity

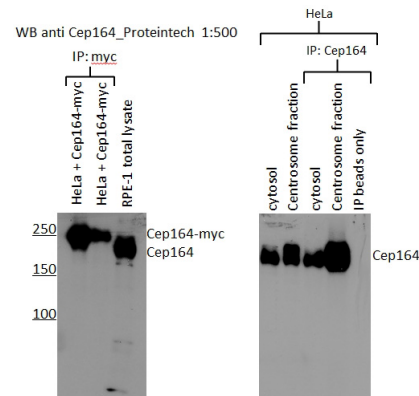
Human; other species not tested.

IF: 1:20-1:200

Antibody description

CEP164 Rabbit Polyclonal antibody. Positive WB detected in HEK-293 cells. Positive IP detected in RPE1 cells. Positive IF detected in MDCK cells, HeLa cells. Positive IHC detected in human colon tissue, human cervical cancer tissue. Observed molecular weight by Western-blot: 164 kDa

Validations



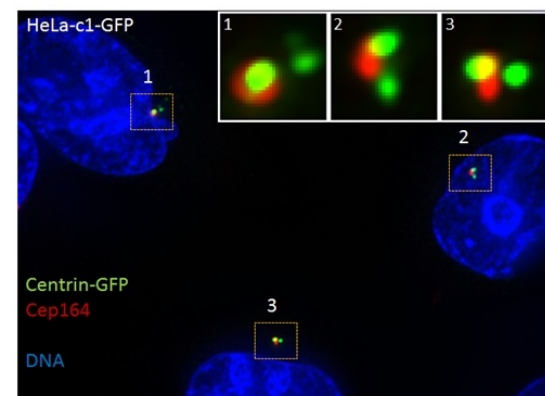
Preparation

This antibody was obtained by immunization of CEP164 recombinant protein (Accession Number: BC000602). Purification method: Antigen affinity purified.

WB results of CEP164 (Catalog No:109267, 1:500) with RPE1 cells by Laboratory of Protein Dynamics and Signaling; Center for Cancer Research, National Cancer Institute.

Formulation

PBS with 0.02% sodium azide and 50% glycerol pH 7.3.



Storage

Store at -20°C. DO NOT ALIQUOT

IF results of CEP164 (Catalog No:109267, 1:1000) with HeLa cells (1.5% formaldehyde, 10 min RT) by Laboratory of Protein Dynamics and Signaling; Center for Cancer Research, National Cancer

Clonality

Polyclonal

Ig Type

Rabbit IgG

Applications

ELISA, IP, IF, IHC, WB

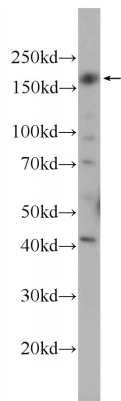
Dilutions

Recommended Dilution:

WB: 1:200-1:1000

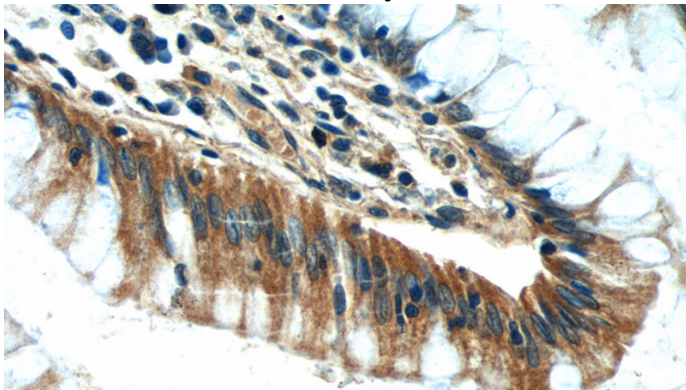
CEP164 antibody

Catalog Number: 109267

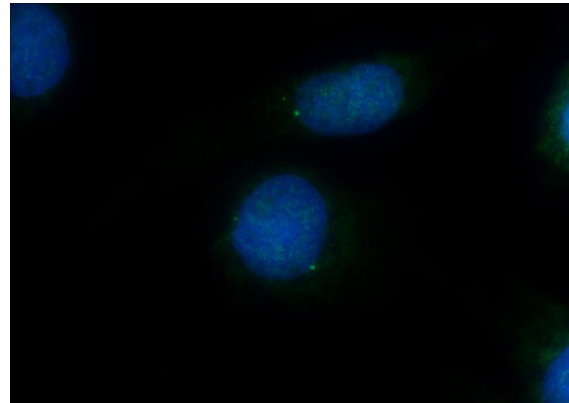


Institute.

HEK-293 cells were subjected to SDS PAGE followed by western blot with Catalog No:109267(CEP164 Antibody) at dilution of 1:300



Immunohistochemistry of paraffin-embedded human colon tissue slide using Catalog No:109267(CEP164 Antibody) at dilution of 1:50 (under 40x lens)



Immunofluorescent analysis of MDCK cells using Catalog No:109267(CEP164 Antibody) at dilution of 1:50 and Alexa Fluor 488-conjugated AffiniPure Goat Anti-Rabbit IgG(H+L)