

# CENPC antibody



Catalog Number: 109251

## Product name

CENPC antibody

## Immunogen

[Human CENPC1 Recombinant protein \(GST tag\)](#)

## Specificity

Human, Mouse; other species not tested.

## Antibody description

CENPC Rabbit Polyclonal antibody. Positive IF detected in HeLa cells. Positive WB detected in HeLa cells, A431 cells, Jurkat cells. Observed molecular weight by Western-blot: 140 kDa

## Preparation

This antibody was obtained by immunization of CENPC recombinant protein (Accession Number: NM\_001812). Purification method: Antigen affinity purified.

## Formulation

PBS with 0.02% sodium azide and 50% glycerol pH 7.3.

## Storage

Store at -20°C. DO NOT ALIQUOT

## Clonality

Polyclonal

## Ig Type

Rabbit IgG

## Applications

ELISA, WB, IF

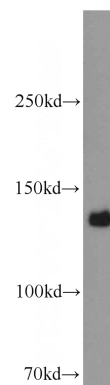
## Dilutions

Recommended Dilution:

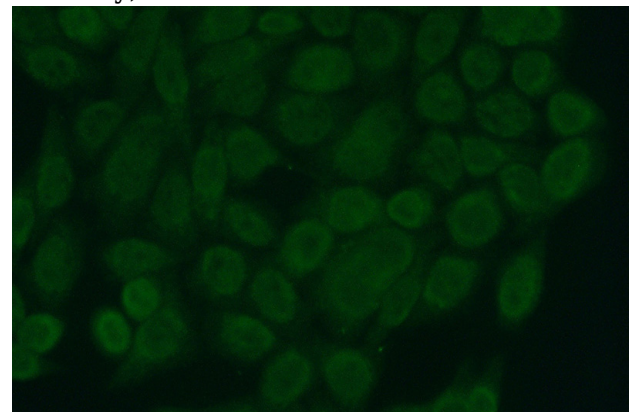
WB: 1:200-1:2000

IF: 1:50-1:500

## Validations



HeLa cells were subjected to SDS PAGE followed by western blot with Catalog No:109251(CENPC1 antibody) at dilution of 1:800



Immunofluorescent analysis of (10% Formaldehyde) fixed HeLa cells using Catalog No:109251(CENPC1 Antibody) at dilution of 1:50 and Alexa Fluor 488-conjugated AffiniPure Goat Anti-Rabbit IgG(H+L)