

# Choline kinase alpha-Specific antibody



Catalog Number: 109241

## Product name

Choline kinase alpha-Specific antibody

IHC: 1:20-1:200

IF: 1:10-1:100

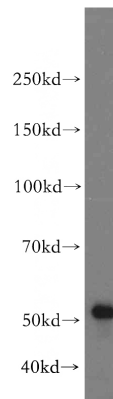
## Specificity

Human, Mouse, Rat; other species not tested.

## Antibody description

Choline kinase alpha-Specific Rabbit Polyclonal antibody. Positive WB detected in HepG2 cells, COLO 320 cells, human testis tissue, mouse colon tissue, mouse testis tissue, Raji cells. Positive IHC detected in human breast cancer tissue, human liver tissue. Positive IF detected in HepG2 cells. Observed molecular weight by Western-blot: 50kd

## Validations



## Preparation

This antibody was obtained by immunization of Peptide (Accession Number: NM\_001277). Purification method: Antigen affinity purified.

HepG2 cells were subjected to SDS PAGE followed by western blot with Catalog No:109241(CHKA-Specific antibody) at dilution of 1:300

## Formulation

PBS with 0.1% sodium azide and 50% glycerol pH 7.3.

## Storage

Store at -20°C. DO NOT ALIQUOT

## Clonality

Polyclonal

## Ig Type

Rabbit IgG

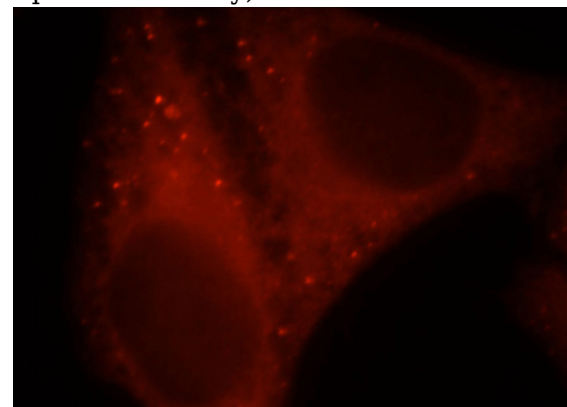
## Applications

ELISA, WB, IF, IHC

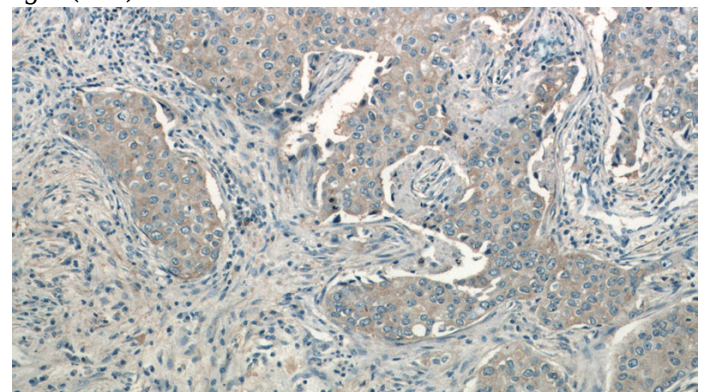
## Dilutions

Recommended Dilution:

WB: 1:200-1:1000



Immunofluorescent analysis of HepG2 cells, using CHKA antibody Catalog No:109241 at 1:25 dilution and Rhodamine-labeled goat anti-rabbit IgG (red).



Immunohistochemistry of paraffin-embedded

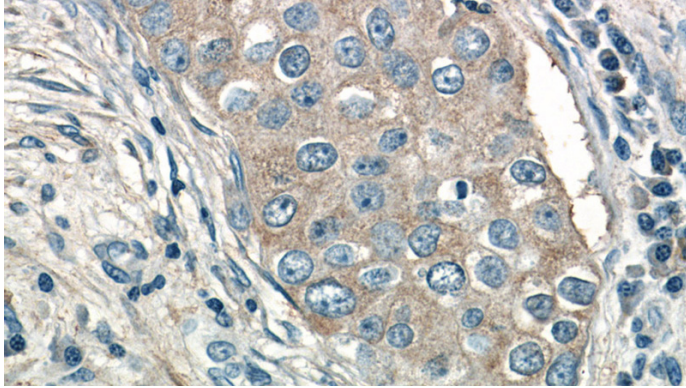
# Choline kinase alpha-Specific antibody



Catalog Number: 109241

---

human breast cancer tissue slide using Catalog No:109241(CHKA-Specific Antibody) at dilution of 1:50(under 10x lens)



Immunohistochemistry of paraffin-embedded human breast cancer tissue slide using Catalog No:109241(CHKA-Specific Antibody) at dilution of 1:50(under 40x lens)