

CHMP4B antibody



Catalog Number: 109235

Product name

CHMP4B antibody

WB: 1:200-1:1000

IHC: 1:20-1:200

Specificity

Human, Mouse, Rat; other species not tested.

Antibody description

CHMP4B Rabbit Polyclonal antibody. Positive WB detected in mouse heart tissue, HeLa cells, rat heart tissue, transfected cells. Positive IHC detected in human oesophagus cancer tissue, human heart tissue, human skeletal muscle tissue. Observed molecular weight by Western-blot: 29-33 kDa

Preparation

This antibody was obtained by immunization of CHMP4B recombinant protein (Accession Number: NM_176812). Purification method: Antigen affinity purified.

Formulation

PBS with 0.1% sodium azide and 50% glycerol pH 7.3.

Storage

Store at -20°C. DO NOT ALIQUOT

Clonality

Polyclonal

Ig Type

Rabbit IgG

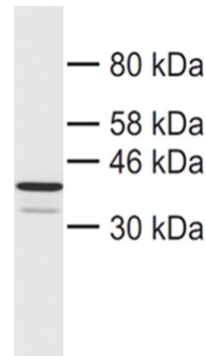
Applications

ELISA, WB, IHC

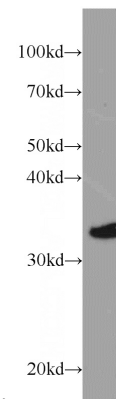
Dilutions

Recommended Dilution:

Validations

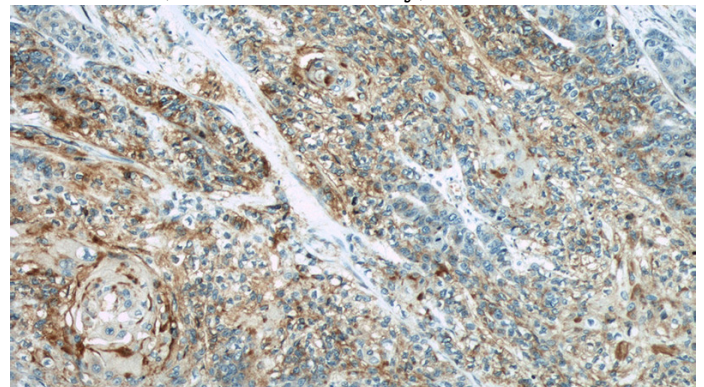


WB result of anti-CHMP4B (Catalog No:109235) with "in vitro translated MYC-CHMP4B in



wheatgerm lysates".

mouse heart tissue were subjected to SDS PAGE followed by western blot with Catalog No:109235(CHMP4B antibody) at dilution of 1:200

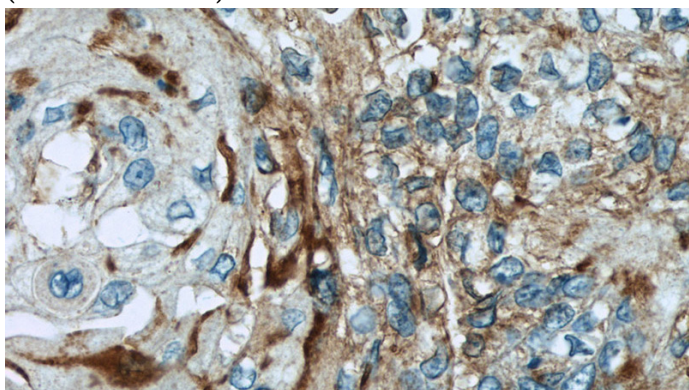


Immunohistochemical of paraffin-embedded human oesophagus cancer using Catalog No:109235(CHMP4B antibody) at dilution of 1:50

CHMP4B antibody

Catalog Number: 109235

(under 10x lens)



Immunohistochemical of paraffin-embedded human oesophagus cancer using Catalog No:109235(CHMP4B antibody) at dilution of 1:50 (under 40x lens)