

CHMP2B antibody



Catalog Number: 109234

Product name

CHMP2B antibody

Immunogen

[Human CHMP2B Recombinant protein \(His tag\)](#)

Specificity

Human, Mouse, Rat; other species not tested.

Antibody description

CHMP2B Rabbit Polyclonal antibody. Positive WB detected in SH-SY5Y cells, human brain tissue, human heart tissue, human ileum tissue, human kidney tissue, human placenta tissue, mouse brain tissue, NIH/3T3 cells. Positive IF detected in HepG2 cells, PFA fixed cells. Positive IHC detected in human liver tissue, human brain tissue. Observed molecular weight by Western-blot: 32 kDa

Preparation

This antibody was obtained by immunization of CHMP2B recombinant protein (Accession Number: NM_014043). Purification method: Antigen affinity purified.

Formulation

PBS with 0.02% sodium azide and 50% glycerol pH 7.3.

Storage

Store at -20°C. DO NOT ALIQUOT

Clonality

Polyclonal

Ig Type

Rabbit IgG

Applications

ELISA, WB, IF, IHC

Dilutions

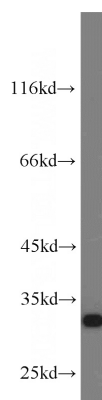
Recommended Dilution:

WB: 1:200-1:2000

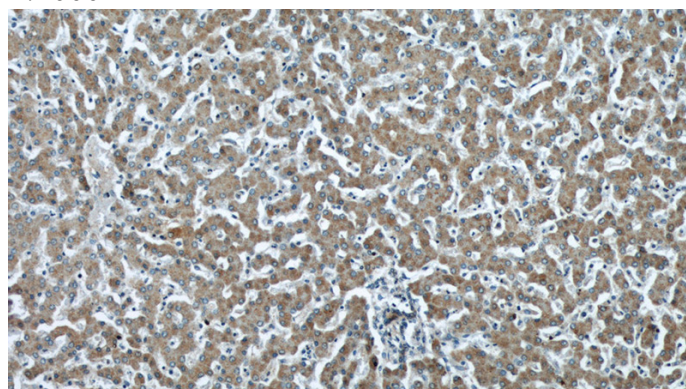
IHC: 1:20-1:200

IF: 1:10-1:100

Validations



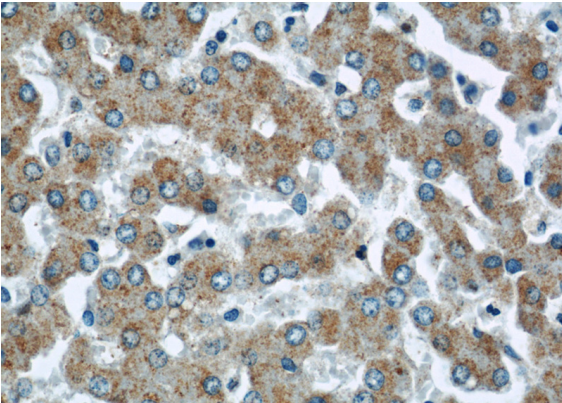
SH-SY5Y cells were subjected to SDS PAGE followed by western blot with Catalog No:109234(CHMP2B antibody) at dilution of 1:1000



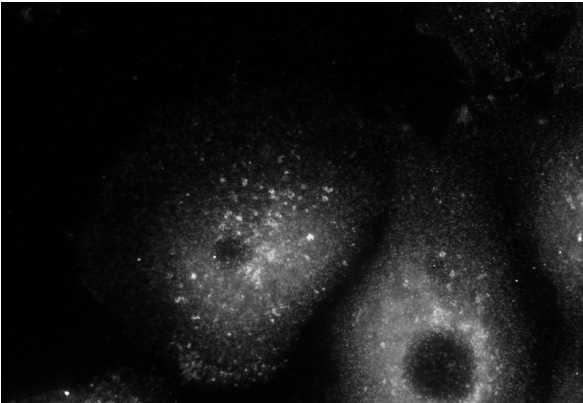
Immunohistochemical of paraffin-embedded human liver using Catalog No:109234(CHMP2B antibody) at dilution of 1:50 (under 10x lens)

CHMP2B antibody

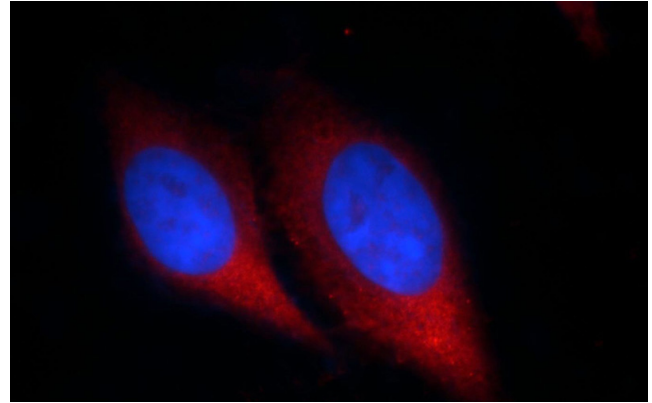
Catalog Number: 109234



Immunohistochemical of paraffin-embedded human liver using Catalog No:109234(CHMP2B antibody) at dilution of 1:50 (under 40x lens)



IF result (endosomal stain) of anti-CHMP2B (Catalog No:109234) with the cell (PFA fixed) which has been treated with siRNA for VPS4 by Dr. Philip Woodman.



Immunofluorescent analysis of HepG2 cells, using CHMP2B antibody Catalog No:109234 at 1:25 dilution and Rhodamine-labeled goat anti-rabbit IgG (red). Blue pseudocolor = DAPI (fluorescent DNA dye).