

Chk1 antibody



Catalog Number: 109228

Product name

Chk1 antibody

Specificity

Human, Mouse, Rat; other species not tested.

Antibody description

Chk1 Rabbit Polyclonal antibody. Positive WB detected in mouse thymus tissue, HeLa cells, K-562 cells. Positive FC detected in HepG2 cells. Positive IF detected in HepG2 cells. Observed molecular weight by Western-blot: 50-55 kDa

Preparation

This antibody was obtained by immunization of Chk1 recombinant protein (Accession Number: NM_001114122). Purification method: Antigen affinity purified.

Formulation

PBS with 0.1% sodium azide and 50% glycerol pH 7.3.

Storage

Store at -20°C. DO NOT ALIQUOT

Clonality

Polyclonal

Ig Type

Rabbit IgG

Applications

ELISA, WB, IF, FC

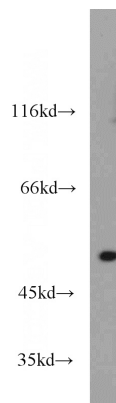
Dilutions

Recommended Dilution:

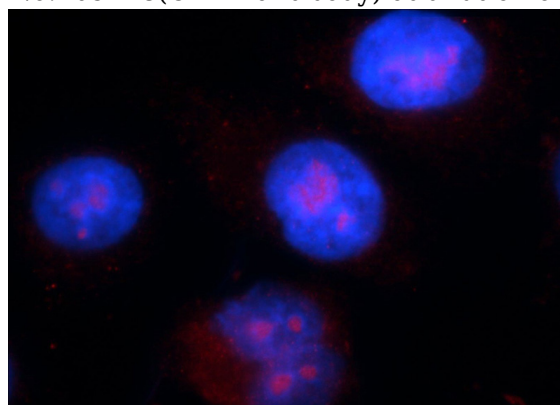
WB: 1:200-1:2000

IF: 1:10-1:100

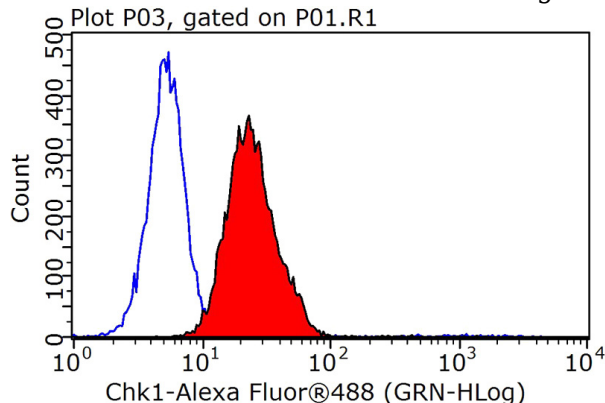
Validations



mouse thymus tissue were subjected to SDS PAGE followed by western blot with Catalog No:109228(CHK1 antibody) at dilution of 1:1000



Immunofluorescent analysis of HepG2 cells using Catalog No:109228(CHK1 Antibody) at dilution of 1:25 and Rhodamine-Goat anti-Rabbit IgG



1X10⁶ HepG2 cells were stained with 0.2ug CHK1 antibody (Catalog No:109228, red) and control antibody (blue). Fixed with 90% MeOH

Chk1 antibody



Catalog Number: 109228

blocked with 3% BSA (30 min). Alexa Fluor 488-

conjugated AffiniPure Goat Anti-Rabbit IgG(H+L)
with dilution 1:1000.