

# CHIA antibody



Catalog Number: 109226

## Product name

CHIA antibody

## Immunogen

[Human CHIA Recombinant protein \(His tag\)](#)

## Specificity

Human, Mouse, Rat; other species not tested.

## Antibody description

CHIA Rabbit Polyclonal antibody. Positive IHC detected in human stomach tissue, human lung tissue. Positive IF detected in HepG2 cells, Hela cells. Positive WB detected in mouse lung tissue. Observed molecular weight by Western-blot: 52 kDa

## Preparation

This antibody was obtained by immunization of CHIA recombinant protein (Accession Number: NM\_021797). Purification method: Antigen affinity purified.

## Formulation

PBS with 0.02% sodium azide and 50% glycerol pH 7.3.

## Storage

Store at -20°C. DO NOT ALIQUOT

## Clonality

Polyclonal

## Ig Type

Rabbit IgG

## Applications

ELISA, WB, IHC, IF

## Dilutions

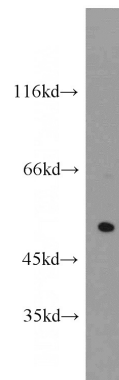
Recommended Dilution:

WB: 1:200-1:2000

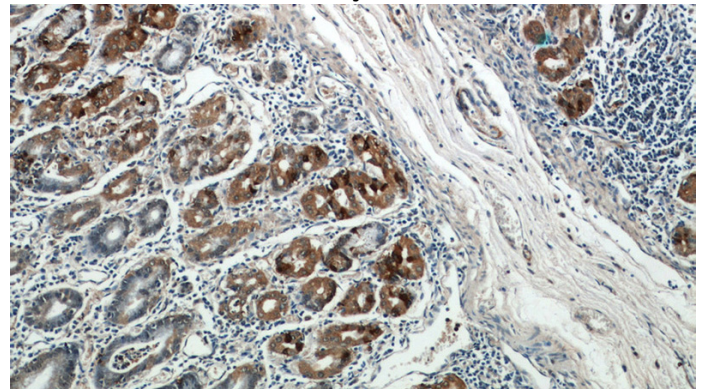
IHC: 1:20-1:200

IF: 1:10-1:100

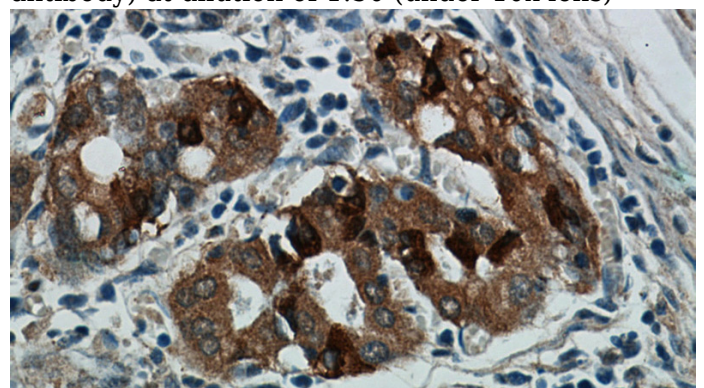
## Validations



mouse lung tissue were subjected to SDS PAGE followed by western blot with Catalog No:109226(CHIA antibody) at dilution of 1:500



Immunohistochemical of paraffin-embedded human stomach using Catalog No:109226(CHIA antibody) at dilution of 1:50 (under 10x lens)

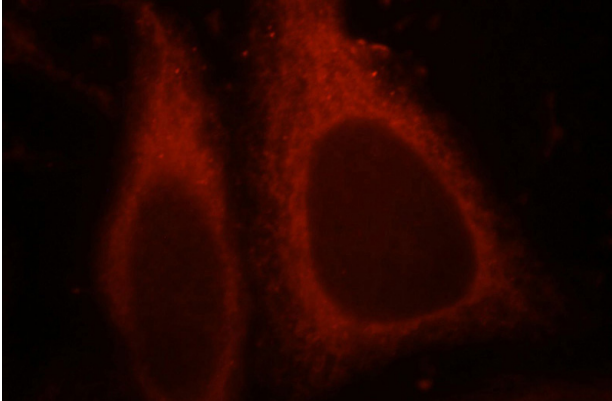


# CHIA antibody

Catalog Number: 109226

---

Immunohistochemical of paraffin-embedded human stomach using Catalog No:109226(CHIA antibody) at dilution of 1:50 (under 40x lens)



Immunofluorescent analysis of HepG2 cells, using CHIA antibody Catalog No:109226 at 1:25 dilution and Rhodamine-labeled goat anti-rabbit IgG (red).