

CHFR antibody

Catalog Number: 109224

Product name

CHFR antibody

Specificity

Human, Mouse, Rat; other species not tested.

Antibody description

CHFR Rabbit Polyclonal antibody. Positive IHC detected in human endometrial cancer tissue, human lung cancer tissue. Positive WB detected in HepG2 cells, A549 cells, Jurkat cells, mouse brain tissue, SMMC-7721 cells. Observed molecular weight by Western-blot: 70-85 kDa

Preparation

This antibody was obtained by immunization of CHFR recombinant protein (Accession Number: NM_001161346). Purification method: Antigen affinity purified.

Formulation

PBS with 0.02% sodium azide and 50% glycerol pH 7.3.

Storage

Store at -20°C. DO NOT ALIQUOT

Clonality

Polyclonal

Ig Type

Rabbit IgG

Applications

ELISA, WB, IHC

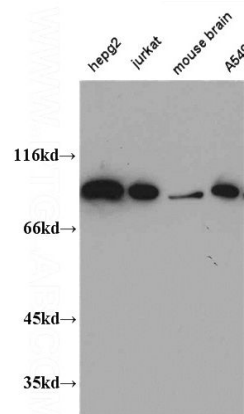
Dilutions

Recommended Dilution:

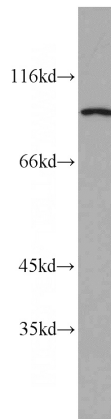
WB: 1:500-1:5000

IHC: 1:20-1:200

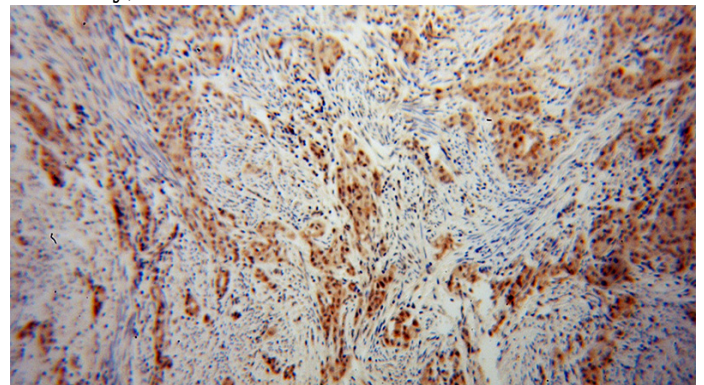
Validations



WB result of Catalog No:109224(CHFR antibody).



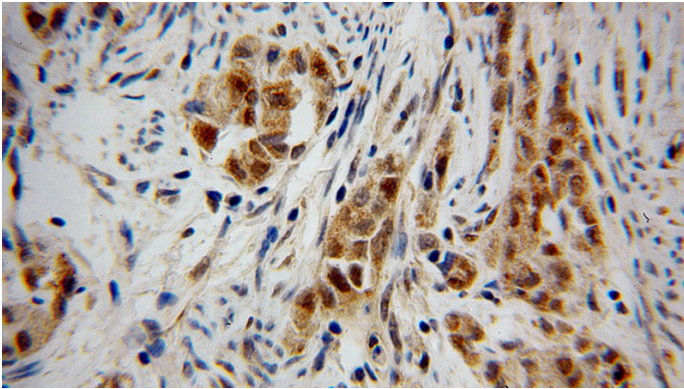
HepG2 cells were subjected to SDS PAGE followed by western blot with Catalog No:109224(CHFR antibody) at dilution of 1:1000



Immunohistochemical of paraffin-embedded human endometrial cancer using Catalog No:109224(CHFR antibody) at dilution of 1:100 (under 10x lens)

CHFR antibody

Catalog Number: 109224



Immunohistochemical of paraffin-embedded human endometrial cancer using Catalog No:109224(CHFR antibody) at dilution of 1:100 (under 40x lens)