

CHD3 antibody

Catalog Number: 109219

Product name

CHD3 antibody

IHC: 1:20-1:200

IF: 1:50-1:500

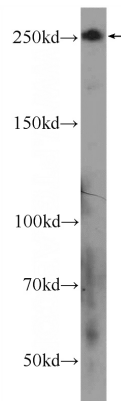
Specificity

Human; other species not tested.

Validations

Antibody description

CHD3 Rabbit Polyclonal antibody. Positive WB detected in HEK-293 cells. Positive IHC detected in human kidney tissue, human colon tissue, human ovary tissue. Positive IF detected in HEK-293 cells. Observed molecular weight by Western-blot: 240 kDa



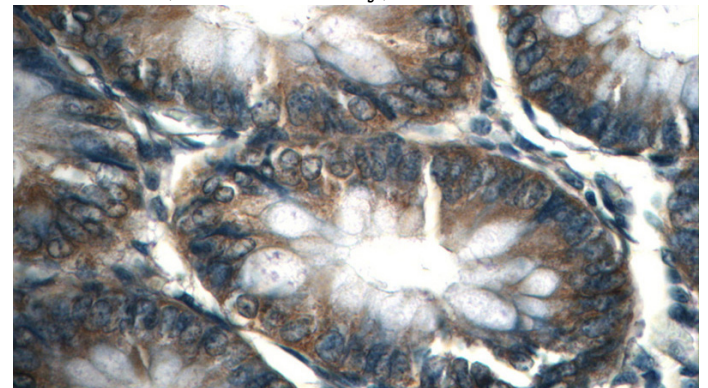
Preparation

This antibody was obtained by immunization of Peptide (Accession Number: NM_005852). Purification method: Antigen affinity purified.

HEK-293 cells were subjected to SDS PAGE followed by western blot with Catalog No:109219(CHD3 Antibody) at dilution of 1:600

Formulation

PBS with 0.1% sodium azide and 50% glycerol pH 7.3.



Storage

Store at -20°C. DO NOT ALIQUOT

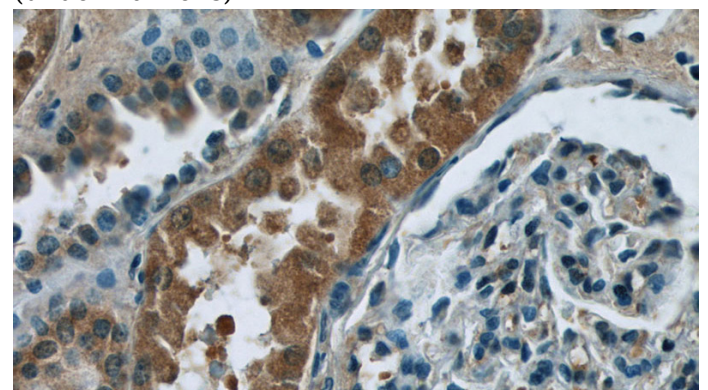
Clonality

Polyclonal

Immunohistochemistry of paraffin-embedded human colon tissue slide using Catalog No:109219(CHD3 Antibody) at dilution of 1:50 (under 40x lens)

Ig Type

Rabbit IgG



Applications

ELISA, IHC, WB, IF

Dilutions

Recommended Dilution:

WB: 1:200-1:2000

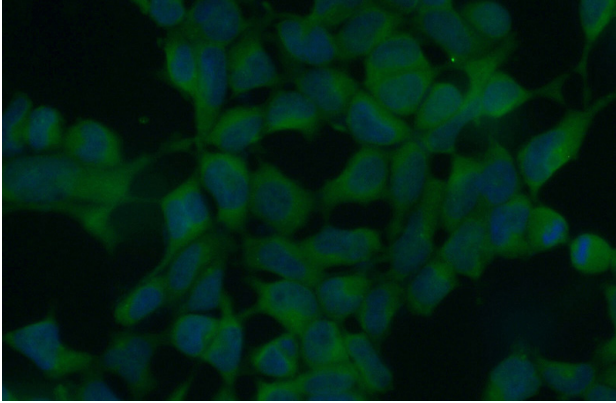
Immunohistochemistry of paraffin-embedded

CHD3 antibody



Catalog Number: 109219

human kidney tissue slide using Catalog No:109219(CHD3 Antibody) at dilution of 1:50 (under 40x lens)



Immunofluorescent analysis of (10% Formaldehyde) fixed HEK-293 cells using Catalog No:109219(CHD3 Antibody) at dilution of 1:50 and Alexa Fluor 488-conjugated AffiniPure Goat Anti-Rabbit IgG(H+L)