

CHD2 antibody

Catalog Number: 109218

Product name

CHD2 antibody

IP: 1:200-1:1000

IHC: 1:20-1:200

Specificity

Human, Rat; other species not tested.

Antibody description

CHD2 Rabbit Polyclonal antibody. Positive IHC detected in human lymphoma tissue. Positive WB detected in human placenta tissue. Positive IP detected in human placenta tissue. Observed molecular weight by Western-blot: 95 kDa

Preparation

This antibody was obtained by immunization of CHD2 recombinant protein (Accession Number: NM_001042572). Purification method: Antigen affinity purified.

Formulation

PBS with 0.1% sodium azide and 50% glycerol pH 7.3.

Storage

Store at -20°C. DO NOT ALIQUOT

Clonality

Polyclonal

Ig Type

Rabbit IgG

Applications

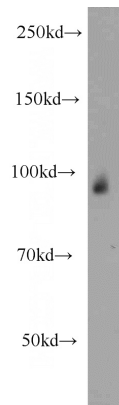
ELISA, IHC, WB, IP

Dilutions

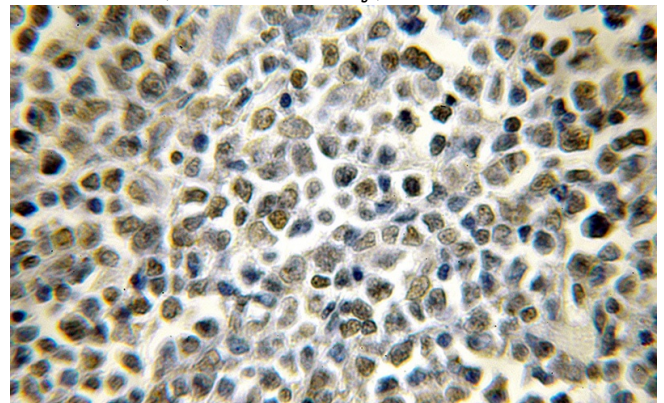
Recommended Dilution:

WB: 1:200-1:2000

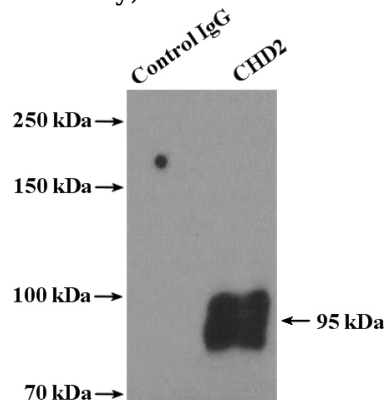
Validations



human placenta tissue were subjected to SDS PAGE followed by western blot with Catalog No:109218(CHD2 antibody) at dilution of 1:500



Immunohistochemical of paraffin-embedded human lymphoma using Catalog No:109218(CHD2 antibody) at dilution of 1:50 (under 10x lens)



IP Result of anti-CHD2 (IP:Catalog No:109218, 4ug; Detection:Catalog No:109218 1:300) with

CHD2 antibody



Catalog Number: 109218

human placenta tissue lysate 4000ug.