

# CHCHD4 antibody



Catalog Number: 109214

## Product name

CHCHD4 antibody

Recommended Dilution:

WB: 1:500-1:5000

## Specificity

Human, Mouse, Rat; other species not tested.

IP: 1:200-1:2000

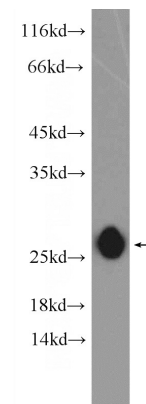
IHC: 1:20-1:200

## Antibody description

CHCHD4 Rabbit Polyclonal antibody. Positive IHC detected in human kidney tissue. Positive IF detected in Hela cells. Positive IP detected in mouse brain tissue. Positive WB detected in rat brain tissue, human heart tissue, L02 cells, mouse brain tissue, mouse kidney tissue, mouse lung tissue, mouse spleen tissue. Observed molecular weight by Western-blot: 22-25 kDa

IF: 1:10-1:100

## Validations



## Preparation

This antibody was obtained by immunization of CHCHD4 recombinant protein (Accession Number: NM\_001098502). Purification method: Antigen affinity purified.

rat brain tissue were subjected to SDS PAGE followed by western blot with Catalog No:109214(CHCHD4 Antibody) at dilution of 1:1500

## Formulation

PBS with 0.02% sodium azide and 50% glycerol pH 7.3.

## Storage

Store at -20°C. DO NOT ALIQUOT

## Clonality

Polyclonal

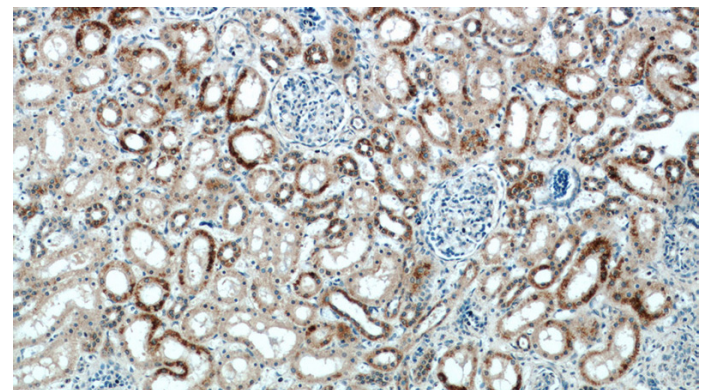
## Ig Type

Rabbit IgG

## Applications

ELISA, IHC, IF, WB, IP

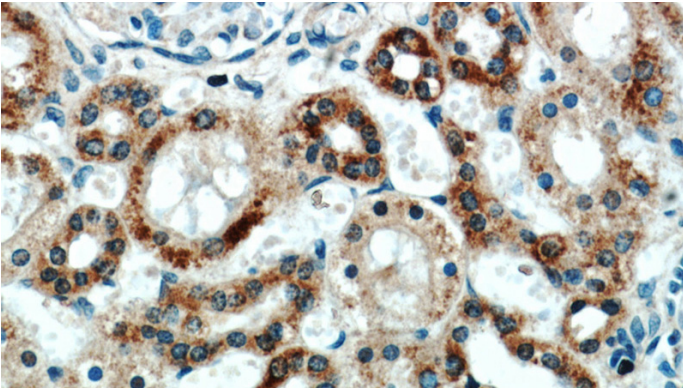
## Dilutions



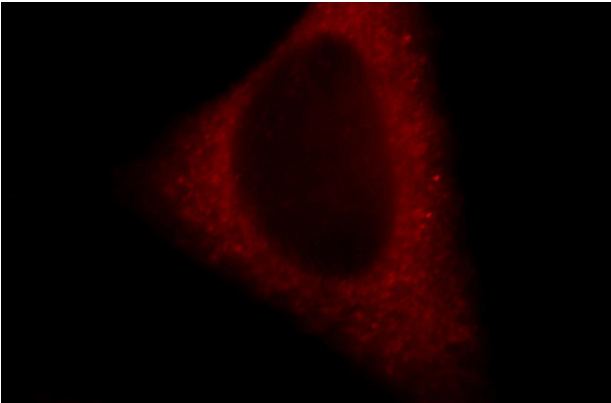
Immunohistochemical of paraffin-embedded human kidney using Catalog No:109214(CHCHD4 antibody) at dilution of 1:100 (under 10x lens)

# CHCHD4 antibody

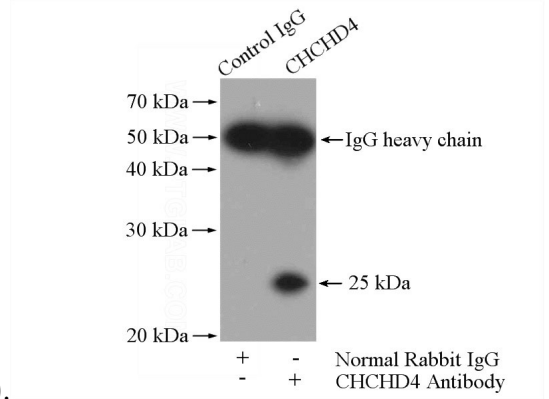
Catalog Number: 109214



Immunohistochemical of paraffin-embedded human kidney using Catalog No:109214(CHCHD4 antibody) at dilution of 1:100 (under 40x lens)



Immunofluorescent analysis of HepG2 cells, using CHCHD4 antibody Catalog No:109214 at 1:25 dilution and Rhodamine-labeled goat anti-rabbit



IgG (red).

IP Result of anti-CHCHD4 (IP:Catalog No:109214, 4ug; Detection:Catalog No:109214 1:500) with mouse brain tissue lysate 4000ug.