

# CHAT antibody

Catalog Number: 109209

## Product name

CHAT antibody

WB: 1:200-1:2000

IHC: 1:20-1:200

## Specificity

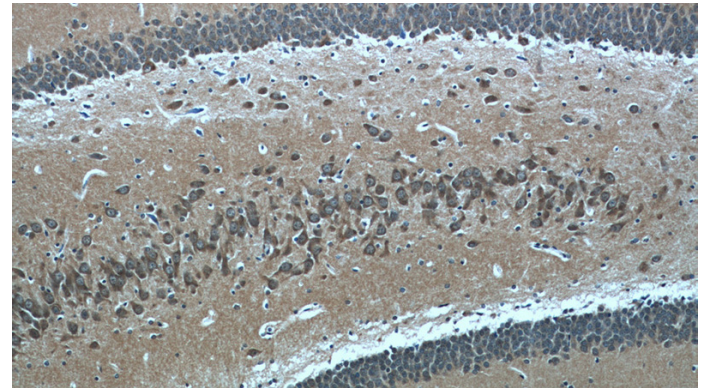
Human, Mouse, Rat; other species not tested.

IF: 1:10-1:100

## Antibody description

CHAT Rabbit Polyclonal antibody. Positive WB detected in rat brain tissue, human placenta tissue, Jurkat cells, mouse placenta tissue. Positive IHC detected in rat brain tissue, human brain tissue, human stomach tissue, mouse brain tissue. Positive IF detected in HepG2 cells. Observed molecular weight by Western-blot: 47-50, 66-70 kDa

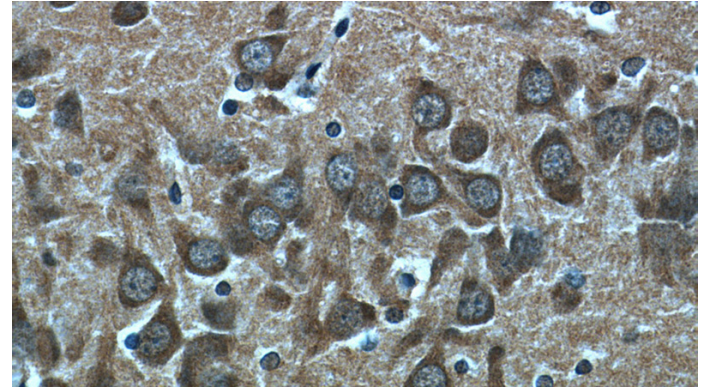
## Validations



Immunohistochemical of paraffin-embedded rat brain using Catalog No:109209(CHAT antibody) at dilution of 1:50 (under 10x lens)

## Preparation

This antibody was obtained by immunization of Peptide (Accession Number: NM\_020549). Purification method: Antigen affinity purified.



Immunohistochemical of paraffin-embedded rat brain using Catalog No:109209(CHAT antibody) at dilution of 1:50 (under 40x lens)

## Formulation

PBS with 0.02% sodium azide and 50% glycerol pH 7.3.

## Storage

Store at -20°C. DO NOT ALIQUOT

## Clonality

Polyclonal

## Ig Type

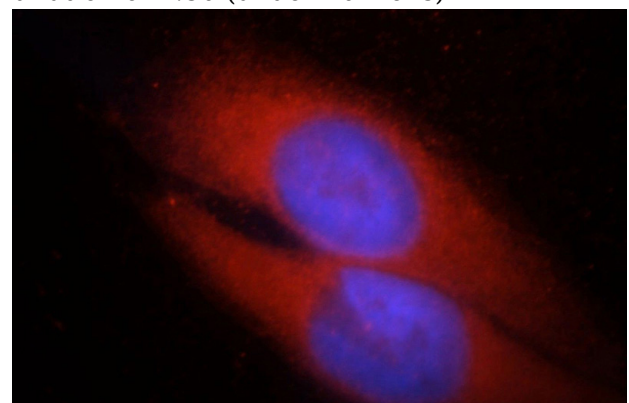
Rabbit IgG

## Applications

ELISA, IF, IHC, WB

## Dilutions

Recommended Dilution:



Immunofluorescent analysis of HepG2 cells, using

# CHAT antibody



Catalog Number: 109209

---

CHAT antibody Catalog No:109209 at 1:25 dilution and Rhodamine-labeled goat anti-rabbit IgG (red). Blue pseudocolor = DAPI (fluorescent

rat brain tissue were subjected to SDS PAGE followed by western blot with Catalog No:109209(CHAT Antibody) at dilution of 1:600

