

# CGGBP1 antibody



Catalog Number: 109202

## Product name

CGGBP1 antibody

## Specificity

Human, Mouse, Rat; other species not tested.

## Antibody description

CGGBP1 Rabbit Polyclonal antibody. Positive WB detected in Jurkat cells, HL-60 cells, K-562 cells, mouse thymus tissue, Raji cells. Positive IHC detected in human prostate cancer. Observed molecular weight by Western-blot: 19-23kd

## Preparation

This antibody was obtained by immunization of CGGBP1 recombinant protein (Accession Number: BC005222). Purification method: Antigen affinity purified.

## Formulation

PBS with 0.02% sodium azide and 50% glycerol pH 7.3.

## Storage

Store at -20°C. DO NOT ALIQUOT

## Clonality

Polyclonal

## Ig Type

Rabbit IgG

## Applications

ELISA, WB, IHC

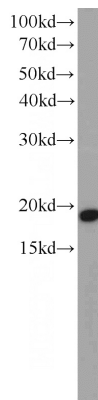
## Dilutions

Recommended Dilution:

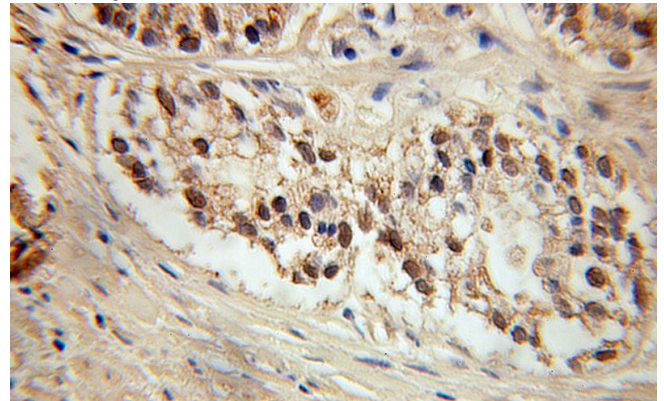
WB: 1:500-1:5000

IHC: 1:20-1:200

## Validations



Jurkat cells were subjected to SDS PAGE followed by western blot with Catalog No:109202(CGGBP1 antibody) at dilution of 1:1000



Immunohistochemical of paraffin-embedded human prostate cancer using Catalog No:109202(CGGBP1 antibody) at dilution of 1:100 (under 10x lens)