

# CFD antibody



Catalog Number: 109197

## Product name

CFD antibody

## Specificity

Human; other species not tested.

## Antibody description

CFD Rabbit Polyclonal antibody. Positive WB detected in human plasma tissue, human placenta tissue. Observed molecular weight by Western-blot: 27 kDa

## Preparation

This antibody was obtained by immunization of CFD recombinant protein (Accession Number: NM\_001928). Purification method: Antigen affinity purified.

## Formulation

PBS with 0.1% sodium azide and 50% glycerol pH 7.3.

## Storage

Store at -20°C. DO NOT ALIQUOT

## Clonality

Polyclonal

## Ig Type

Rabbit IgG

## Applications

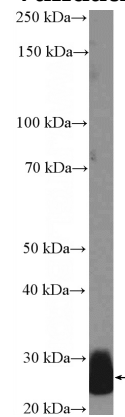
ELISA, WB

## Dilutions

Recommended Dilution:

WB: 1:200-1:2000

## Validations



human plasma tissue were subjected to SDS PAGE followed by western blot with Catalog No:109197(CFD Antibody) at dilution of 1:600