

CEP350-Specific antibody



Catalog Number: 109180

Product name

CEP350-Specific antibody

Specificity

Human, Mouse, Rat; other species not tested.

Antibody description

CEP350-Specific Rabbit Polyclonal antibody.
Positive IHC detected in human testis tissue.
Positive WB detected in mouse heart tissue, Y79 cells. Observed molecular weight by Western-blot: 200-245kd, 143kd, 65kd

Preparation

This antibody was obtained by immunization of Peptide (Accession Number: NM_014810).
Purification method: Antigen affinity purified.

Formulation

PBS with 0.1% sodium azide and 50% glycerol pH 7.3.

Storage

Store at -20°C. DO NOT ALIQUOT

Clonality

Polyclonal

Ig Type

Rabbit IgG

Applications

ELISA, WB, IHC

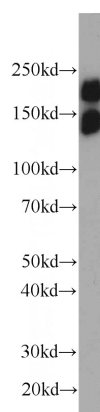
Dilutions

Recommended Dilution:

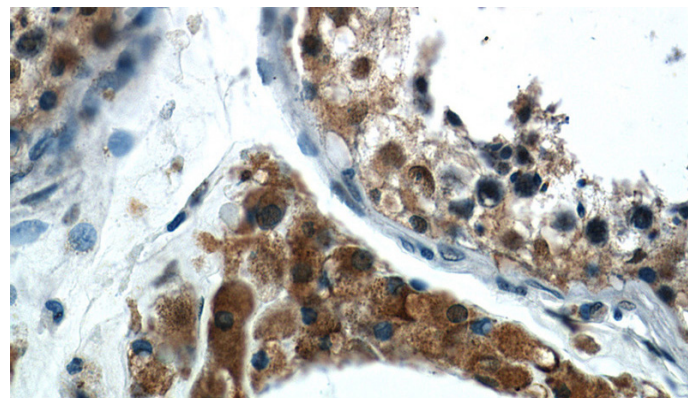
WB: 1:200-1:2000

IHC: 1:20-1:200

Validations



mouse heart tissue were subjected to SDS PAGE followed by western blot with Catalog No:109180(CEP350-Specific antibody) at dilution of 1:600



Immunohistochemistry of paraffin-embedded human testis slide using Catalog No:109180(CEP350-Specific Antibody) at dilution of 1:50