

CDR2L antibody

Catalog Number: 109173

Product name

CDR2L antibody

IP: 1:200-1:2000

IF: 1:20-1:200

Specificity

Human, Mouse, Rat; other species not tested.

Antibody description

CDR2L Rabbit Polyclonal antibody. Positive IF detected in HepG2 cells. Positive IP detected in SH-SY5Y cells. Positive WB detected in SH-SY5Y cells, K-562 cells. Observed molecular weight by Western-blot: 62 kDa

Preparation

This antibody was obtained by immunization of CDR2L recombinant protein (Accession Number: BC047534). Purification method: Antigen affinity purified.

Formulation

PBS with 0.02% sodium azide and 50% glycerol pH 7.3.

Storage

Store at -20°C. DO NOT ALIQUOT

Clonality

Polyclonal

Ig Type

Rabbit IgG

Applications

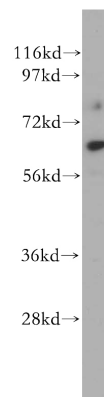
ELISA, WB, IF, IP

Dilutions

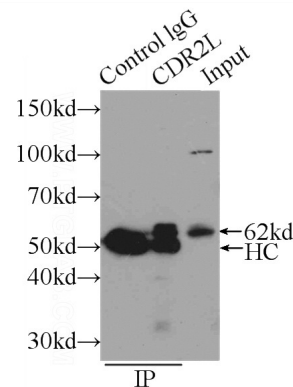
Recommended Dilution:

WB: 1:200-1:2000

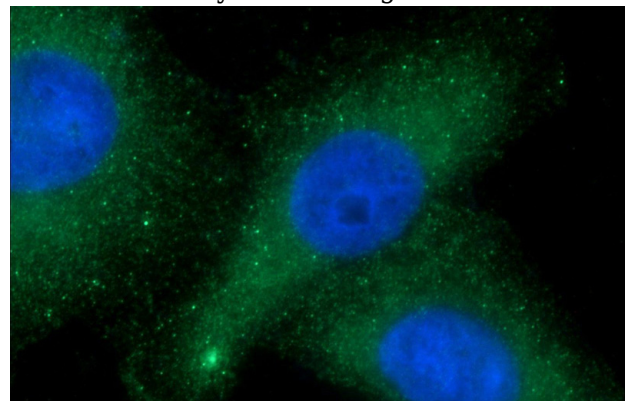
Validations



SH-SY5Y cells were subjected to SDS PAGE followed by western blot with Catalog No:109173(CDR2L antibody) at dilution of 1:500



IP Result of anti-CDR2L (IP:Catalog No:109173, 3ug; Detection:Catalog No:109173 1:500) with SH-SY5Y cells lysate 2500ug.



Immunofluorescent analysis of HepG2 cells using Catalog No:109173(CDR2L Antibody) at dilution

CDR2L antibody



Catalog Number: 109173

of 1:50 and Alexa Fluor 488-conjugated AffiniPure Goat Anti-Rabbit IgG(H+L)