

# CDK1-Specific antibody



Catalog Number: 109157

## Product name

CDK1-Specific antibody

IP: 1:200-1:1000

IHC: 1:20-1:200

## Specificity

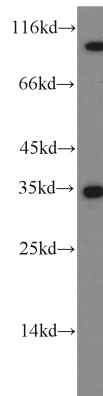
Human, Mouse, Rat; other species not tested.

IF: 1:20-1:200

## Antibody description

CDK1-Specific Rabbit Polyclonal antibody. Positive WB detected in HeLa cells, A431 cells, HEK-293 cells, MCF7 cells. Positive IP detected in HEK-293 cells. Positive IF detected in HeLa cells. Positive IHC detected in human cervical cancer tissue. Observed molecular weight by Western-blot: 34 kDa

## Validations



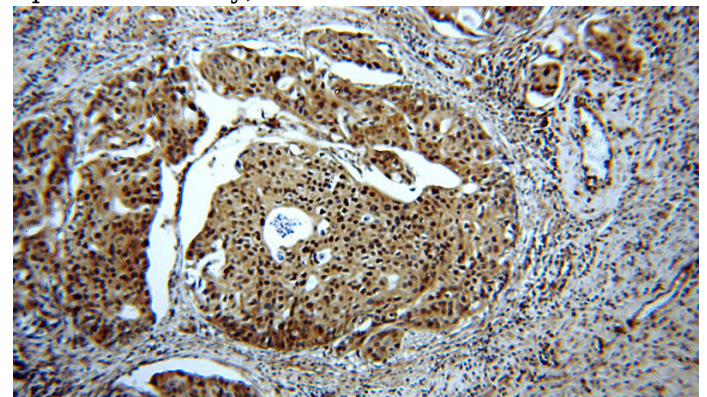
## Preparation

This antibody was obtained by immunization of Peptide (Accession Number: NM\_001786). Purification method: Antigen affinity purified.

HeLa cells were subjected to SDS PAGE followed by western blot with Catalog No:109157(CDC2-Specific antibody) at dilution of 1:100

## Formulation

PBS with 0.02% sodium azide and 50% glycerol pH 7.3.



## Storage

Store at -20°C. DO NOT ALIQUOT

## Clonality

Polyclonal

## Ig Type

Rabbit IgG

## Applications

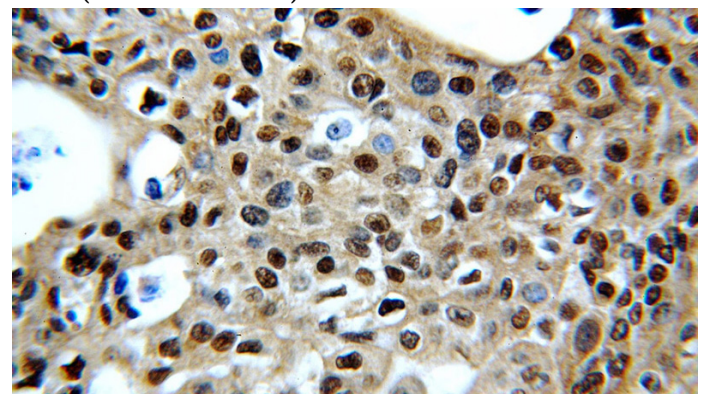
ELISA, WB, IHC, IP, IF

## Dilutions

Recommended Dilution:

WB: 1:200-1:1000

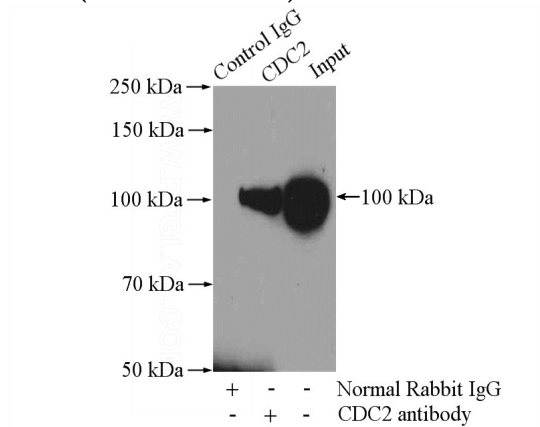
Immunohistochemical of paraffin-embedded human cervical cancer using Catalog No:109157(CDC2-Specific antibody) at dilution of 1:50 (under 10x lens)



# CDK1-Specific antibody

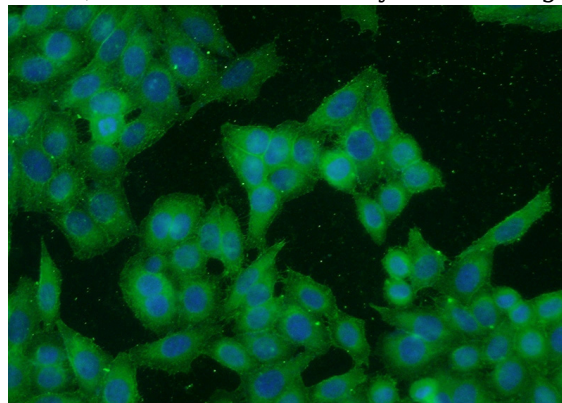
Catalog Number: 109157

Immunohistochemical of paraffin-embedded human cervical cancer using Catalog No:109157(CDC2-Specific antibody) at dilution of 1:50 (under 40x lens)



IP Result of anti-CDC2-Specific (IP:Catalog

No:109157, 4ug; Detection:Catalog No:109157 1:200) with HEK-293 cells lysate 2800ug.



Immunofluorescent analysis of HeLa cells using Catalog No:109157(CDC2-Specific Antibody) at dilution of 1:50 and Alexa Fluor 488-conjugated AffiniPure Goat Anti-Rabbit IgG(H+L)