

Cdc7 Kinase antibody



Catalog Number: 109112

Product name

Cdc7 Kinase antibody

Specificity

Human, Mouse, Rat; other species not tested.

Antibody description

Cdc7 Kinase Rabbit Polyclonal antibody. Positive WB detected in SH-SY5Y cells, HeLa cells. Positive IF detected in HepG2 cells. Observed molecular weight by Western-blot: 64 kDa

Preparation

This antibody was obtained by immunization of Cdc7 Kinase recombinant protein (Accession Number: XM_047431359). Purification method: Antigen affinity purified.

Formulation

PBS with 0.02% sodium azide and 50% glycerol pH 7.3.

Storage

Store at -20°C. DO NOT ALIQUOT

Clonality

Polyclonal

Ig Type

Rabbit IgG

Applications

ELISA, WB, IF

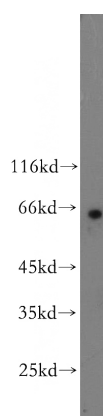
Dilutions

Recommended Dilution:

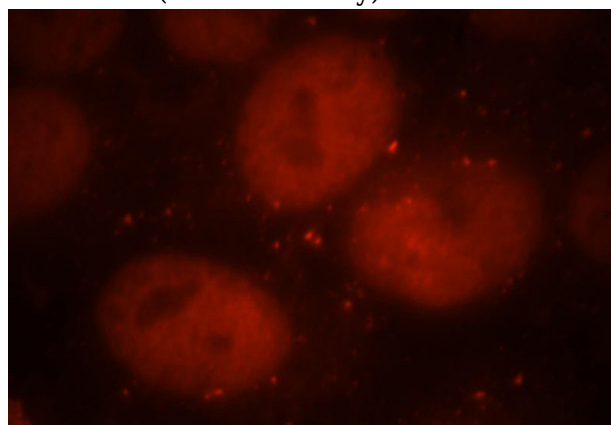
WB: 1:500-1:5000

IF: 1:10-1:100

Validations



SH-SY5Y cells were subjected to SDS PAGE followed by western blot with Catalog No:109112(CDC7 antibody) at dilution of 1:500



Immunofluorescent analysis of HepG2 cells, using CDC7 antibody Catalog No:109112 at 1:25 dilution and Rhodamine-labeled goat anti-rabbit IgG (red).