

CDC2L6 antibody



Catalog Number: 109101

Product name

CDC2L6 antibody

Specificity

human, mouse, rat; other species not tested.

Antibody description

CDC2L6 Rabbit Polyclonal antibody. Positive WB detected in mouse eye tissue. Observed molecular weight by Western-blot: 60-64kd

Preparation

This antibody was obtained by immunization of CDC2L6 recombinant protein (Accession Number: NM_015076). Purification method: Antigen affinity purified.

Formulation

PBS with 0.02% sodium azide and 50% glycerol pH 7.3.

Storage

Store at -20°C. DO NOT ALIQUOT

Clonality

Polyclonal

Ig Type

Rabbit IgG

Applications

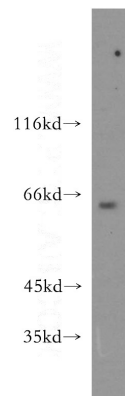
ELISA, WB

Dilutions

Recommended Dilution:

WB: 1:200-1:2000

Validations



mouse eye tissue were subjected to SDS PAGE followed by western blot with Catalog No:109101(CDC2L6 antibody) at dilution of 1:300