

CDC25A antibody

Catalog Number: 109096

Product name

CDC25A antibody

IP: 1:200-1:1000

IHC: 1:20-1:200

Specificity

Human, Mouse; other species not tested.

Antibody description

CDC25A Rabbit Polyclonal antibody. Positive IHC detected in human breast cancer tissue, human gliomas tissue. Positive WB detected in HepG2 cells, mouse liver tissue. Positive IP detected in HeLa cells. Observed molecular weight by Western-blot: 60 kDa

Preparation

This antibody was obtained by immunization of Peptide (Accession Number: NM_001789). Purification method: Antigen affinity purified.

Formulation

0.1M NaHCO₃, 0.1M glycine, 0.02% sodium azide and 50% glycerol pH 7.3.

Storage

Store at -20°C. DO NOT ALIQUOT

Clonality

Polyclonal

Ig Type

Rabbit IgG

Applications

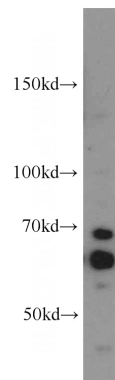
ELISA, WB, IHC, IP

Dilutions

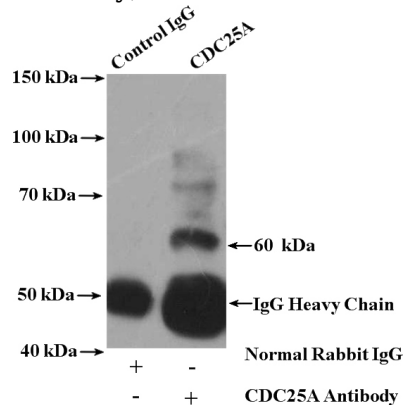
Recommended Dilution:

WB: 1:500-1:5000

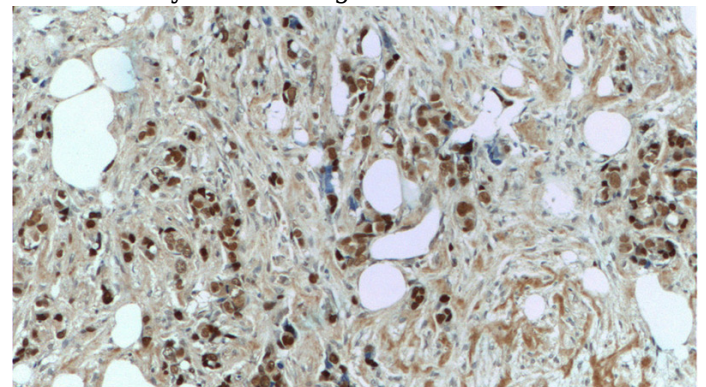
Validations



HepG2 cells were subjected to SDS PAGE followed by western blot with Catalog No:109096(CDC25A antibody) at dilution of 1:1500



IP Result of anti-CDC25A (IP:Catalog No:109096, 4ug; Detection:Catalog No:109096 1:300) with HeLa cells lysate 4000ug.

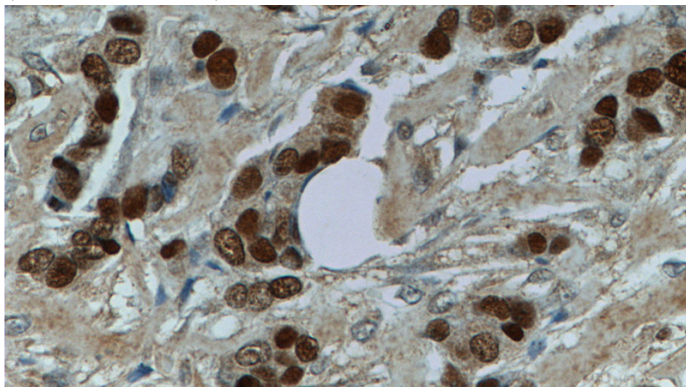


Immunohistochemistry of paraffin-embedded human breast cancer tissue slide using Catalog No:109096(CDC25A antibody).

CDC25A antibody

Catalog Number: 109096

No:109096(CDC25A Antibody) at dilution of 1:50
(under 10x lens)



Immunohistochemistry of paraffin-embedded
human breast cancer tissue slide using Catalog
No:109096(CDC25A Antibody) at dilution of 1:50
(under 40x lens)