

# CDA1 antibody

Catalog Number: 109089

## Product name

CDA1 antibody

WB: 1:500-1:5000

IP: 1:500-1:5000

## Specificity

Human; other species not tested.

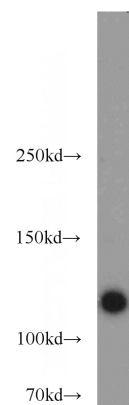
IHC: 1:20-1:200

IF: 1:20-1:200

## Antibody description

CDA1 Rabbit Polyclonal antibody. Positive IHC detected in human lung cancer tissue. Positive IF detected in Hela cells. Positive IP detected in HEK-293 cells. Positive WB detected in HeLa cells, DU 145 cells, HEK-293 cells, MCF7 cells. Observed molecular weight by Western-blot: 120 kDa

## Validations



## Preparation

This antibody was obtained by immunization of CDA1 recombinant protein (Accession Number: NM\_022117). Purification method: Antigen affinity purified.

HeLa cells were subjected to SDS PAGE followed by western blot with Catalog No:109089(TSPYL2,TSPX,NP79 antibody) at dilution of 1:1000

## Formulation

PBS with 0.1% sodium azide and 50% glycerol pH 7.3.

## Storage

Store at -20°C. DO NOT ALIQUOT

## Clonality

Polyclonal

## Ig Type

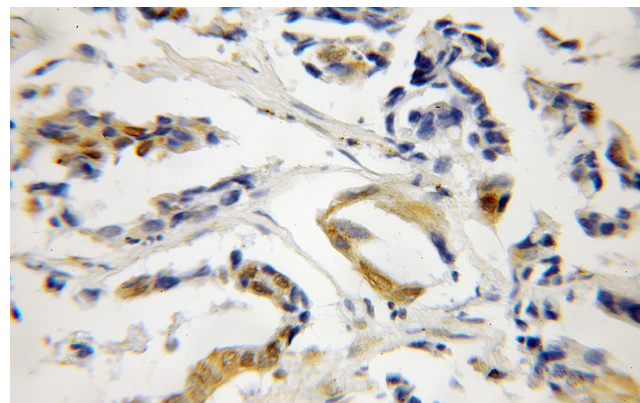
Rabbit IgG

## Applications

ELISA, IHC, IF, IP, WB

## Dilutions

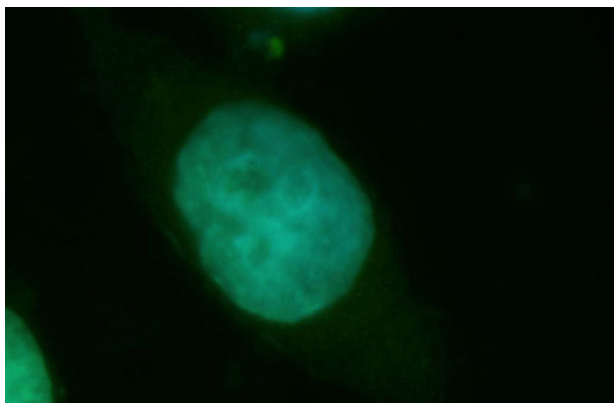
Recommended Dilution:



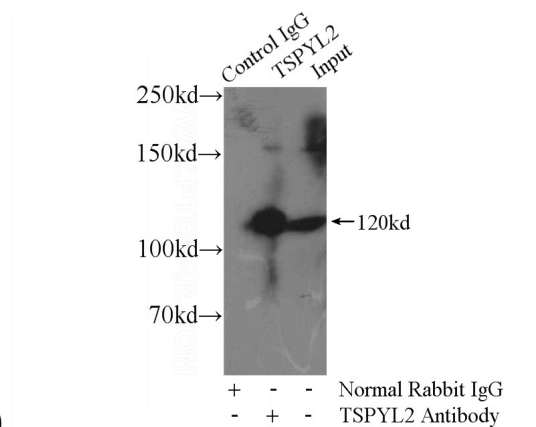
Immunohistochemical of paraffin-embedded human lung cancer using Catalog No:109089(TSPYL2,TSPX,NP79 antibody) at dilution of 1:50 (under 40x lens)

# CDA1 antibody

Catalog Number: 109089



Immunofluorescent analysis of HeLa cells, using TSPYL2 antibody Catalog No:109089 at 1:50 dilution and FITC-labeled donkey anti-rabbit IgG (green). Blue pseudocolor = DAPI (fluorescent



DNA dye).

IP Result of anti-TSPYL2,TSPX,NP79 (IP:Catalog No:109089, 4ug; Detection:Catalog No:109089 1:1000) with HEK-293 cells lysate 1000ug.