

CCR10 antibody



Catalog Number: 109074

Product name

CCR10 antibody

Specificity

Human, Mouse; other species not tested.

Antibody description

CCR10 Rabbit Polyclonal antibody. Positive FC detected in HepG2 cells. Positive IHC detected in human spleen tissue. Positive WB detected in mouse brain tissue. Observed molecular weight by Western-blot: 42 kDa

Preparation

This antibody was obtained by immunization of CCR10 recombinant protein (Accession Number: NM_016602). Purification method: Antigen affinity purified.

Formulation

PBS with 0.02% sodium azide and 50% glycerol pH 7.3.

Storage

Store at -20°C. DO NOT ALIQUOT

Clonality

Polyclonal

Ig Type

Rabbit IgG

Applications

ELISA, WB, IHC, FC

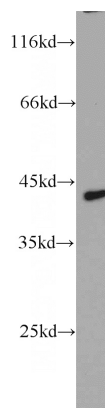
Dilutions

Recommended Dilution:

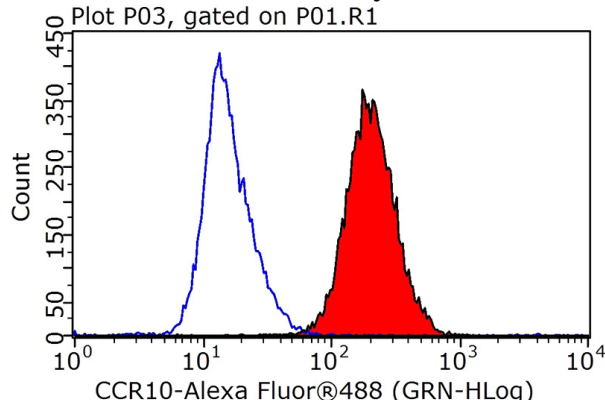
WB: 1:500-1:5000

IHC: 1:20-1:200

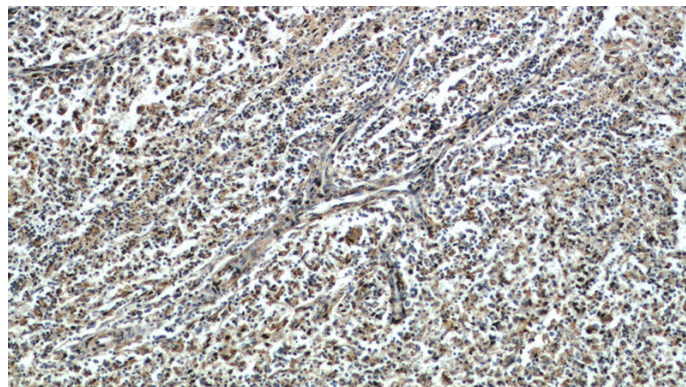
Validations



mouse brain tissue were subjected to SDS PAGE followed by western blot with Catalog No:109074(CCR10 antibody) at dilution of 1:1000 Plot P03, gated on P01.R1



1X10⁶ HepG2 cells were stained with 0.2ug CCR10 antibody (Catalog No:109074, red) and control antibody (blue). Fixed with 90% MeOH blocked with 3% BSA (30 min). Alexa Fluor 488-conjugated AffiniPure Goat Anti-Rabbit IgG(H+L) with dilution 1:1000.

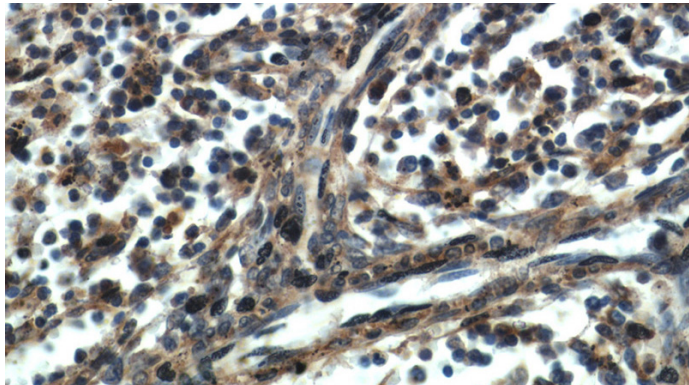


Immunohistochemical of paraffin-embedded

CCR10 antibody

Catalog Number: 109074

human spleen using Catalog No:109074(CCR10 antibody) at dilution of 1:50 (under 10x lens)



Immunohistochemical of paraffin-embedded human spleen using Catalog No:109074(CCR10 antibody) at dilution of 1:50 (under 40x lens)