

CCM2 antibody



Catalog Number: 109066

Product name

CCM2 antibody

Specificity

Human; other species not tested.

Antibody description

CCM2 Rabbit Polyclonal antibody. Positive WB detected in MCF-7 cells. Observed molecular weight by Western-blot: 52 kDa

Preparation

This antibody was obtained by immunization of CCM2 recombinant protein (Accession Number: NM_031443). Purification method: Antigen affinity purified.

Formulation

PBS with 0.1% sodium azide and 50% glycerol pH 7.3.

Storage

Store at -20°C. DO NOT ALIQUOT

Clonality

Polyclonal

Ig Type

Rabbit IgG

Applications

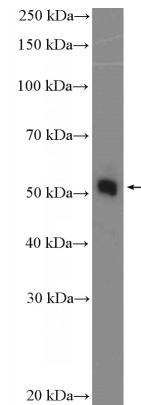
ELISA, WB

Dilutions

Recommended Dilution:

WB: 1:500-1:5000

Validations



MCF-7 cells were subjected to SDS PAGE followed by western blot with Catalog No:109066(CCM2 Antibody) at dilution of 1:1000