

CD138/Syndecan-1 antibody



Catalog Number: 109052

Product name

CD138/Syndecan-1 antibody

Specificity

Human, Mouse, Rat; other species not tested.

Antibody description

CD138/Syndecan-1 Rabbit Polyclonal antibody. Positive WB detected in Raji cells, HeLa cells. Positive IHC detected in human ovary tumor tissue. Observed molecular weight by Western-blot: 60-100 kDa

Preparation

This antibody was obtained by immunization of CD138/Syndecan-1 recombinant protein (Accession Number: NM_002997). Purification method: Antigen affinity purified.

Formulation

PBS with 0.1% sodium azide and 50% glycerol pH 7.3.

Storage

Store at -20°C. DO NOT ALIQUOT

Clonality

Polyclonal

Ig Type

Rabbit IgG

Applications

ELISA, WB, IHC

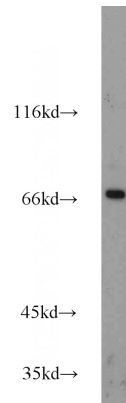
Dilutions

Recommended Dilution:

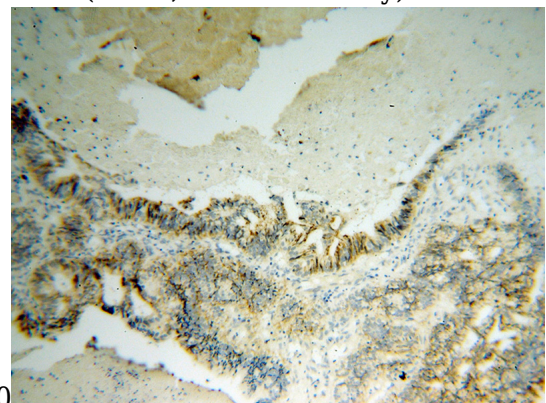
WB: 1:200-1:2000

IHC: 1:20-1:200

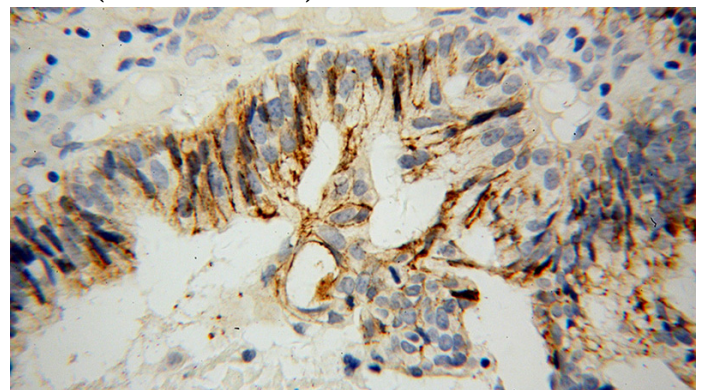
Validations



Raji cells were subjected to SDS PAGE followed by western blot with Catalog No:109052(SDC1,CD138 antibody) at dilution of



Immunohistochemical of paraffin-embedded human ovary tumor using Catalog No:109052(SDC1,CD138 antibody) at dilution of 1:100 (under 10x lens)



Immunohistochemical of paraffin-embedded human ovary tumor using Catalog No:109052(SDC1,CD138 antibody) at dilution of

CD138/Syndecan-1 antibody



Catalog Number: 109052

1:100 (under 40x lens)