

CD13 antibody

Catalog Number: 109046

Product name

CD13 antibody

Specificity

Human, Mouse, Rat; other species not tested.

Antibody description

CD13 Rabbit Polyclonal antibody. Positive WB detected in human kidney tissue, human liver tissue. Positive IHC detected in human kidney tissue, human colon tissue. Positive FC detected in HEK-293 cells. Observed molecular weight by Western-blot: 150 kDa, 135 kDa, 110 kDa

Preparation

This antibody was obtained by immunization of CD13 recombinant protein (Accession Number: XM_011521473). Purification method: Antigen affinity purified.

Formulation

PBS with 0.02% sodium azide and 50% glycerol pH 7.3.

Storage

Store at -20°C. DO NOT ALIQUOT

Clonality

Polyclonal

Ig Type

Rabbit IgG

Applications

ELISA, WB, IHC, FC

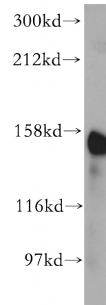
Dilutions

Recommended Dilution:

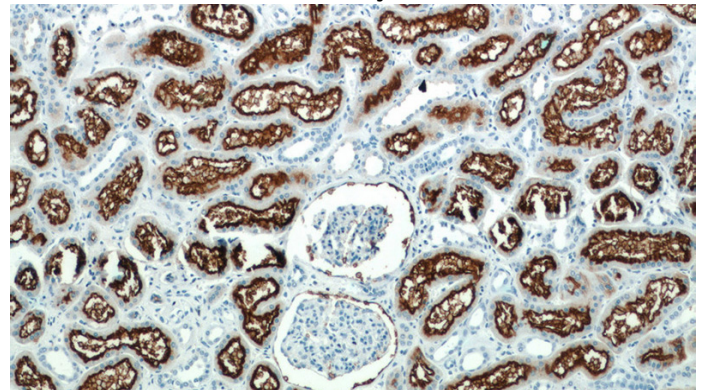
WB: 1:500-1:5000

IHC: 1:20-1:200

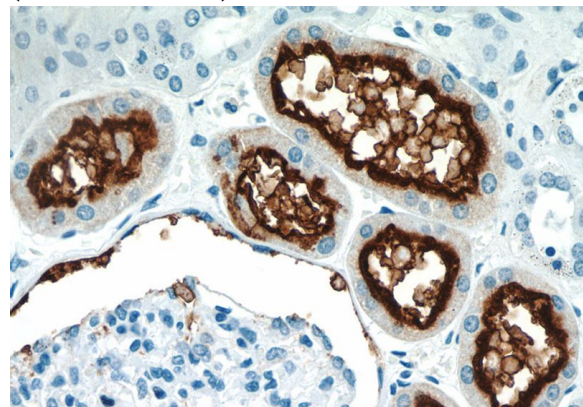
Validations



human kidney tissue were subjected to SDS PAGE followed by western blot with Catalog No:109046(ANPEP antibody) at dilution of 1:500



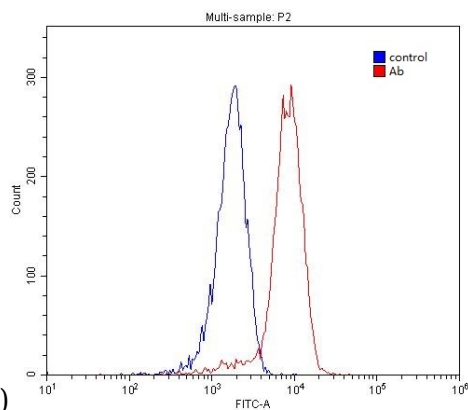
Immunohistochemistry of paraffin-embedded human kidney tissue slide using Catalog No:109046(ANPEP Antibody) at dilution of 1:50 (under 10x lens)



Immunohistochemistry of paraffin-embedded human kidney tissue slide using Catalog No:109046(ANPEP Antibody) at dilution of 1:50

CD13 antibody

Catalog Number: 109046



1X10⁶ HEK-293 cells were stained with 0.2ug ANPEP antibody (Catalog No:109046, red) and control antibody (blue). Fixed with 4% PFA blocked with 3% BSA (30 min). Alexa Fluor 488-conjugated AffiniPure Goat Anti-Rabbit IgG(H+L) with dilution 1:1500.

(under 40x lens)