

CD300LG antibody



Catalog Number: 109024

Product name

CD300LG antibody

Specificity

Human; other species not tested.

Antibody description

CD300LG Rabbit Polyclonal antibody. Positive WB detected in human kidney tissue, HepG2 cells. Observed molecular weight by Western-blot: 36 kDa

Preparation

This antibody was obtained by immunization of CD300LG recombinant protein (Accession Number: NM_145273). Purification method: Antigen affinity purified.

Formulation

PBS with 0.02% sodium azide and 50% glycerol pH 7.3.

Storage

Store at -20°C. DO NOT ALIQUOT

Clonality

Polyclonal

Ig Type

Rabbit IgG

Applications

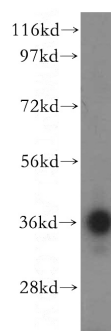
ELISA, WB

Dilutions

Recommended Dilution:

WB: 1:500-1:5000

Validations



human kidney tissue were subjected to SDS PAGE followed by western blot with Catalog No:109024(CD300LG antibody) at dilution of 1:500