

# CD300LF antibody



Catalog Number: 109023

## Product name

CD300LF antibody

## Specificity

Human; other species not tested.

## Antibody description

CD300LF Rabbit Polyclonal antibody. Positive IP detected in K-562 cells. Positive WB detected in K-562 cells, Jurkat cells, U-937 cells. Observed molecular weight by Western-blot: 30-34 kDa

## Preparation

This antibody was obtained by immunization of CD300LF recombinant protein (Accession Number: NM\_001289082). Purification method: Antigen affinity purified.

## Formulation

PBS with 0.1% sodium azide and 50% glycerol pH 7.3.

## Storage

Store at -20°C. DO NOT ALIQUOT

## Clonality

Polyclonal

## Ig Type

Rabbit IgG

## Applications

ELISA, WB, IP

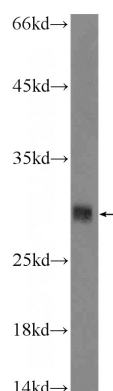
## Dilutions

Recommended Dilution:

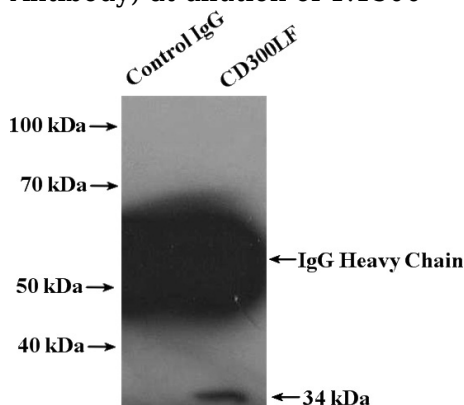
WB: 1:500-1:5000

IP: 1:500-1:5000

## Validations



K-562 cells were subjected to SDS PAGE followed by western blot with Catalog No:109023(CD300LF Antibody) at dilution of 1:1500



IP Result of anti-CD300LF (IP:Catalog No:109023, 4ug; Detection:Catalog No:109023 1:1500) with K-562 cells lysate 4000ug.