

CD20 antibody



Catalog Number: 109005

Product name

CD20 antibody

IP: 1:200-1:2000

IHC: 1:20-1:200

Specificity

Human; other species not tested.

Antibody description

CD20 Rabbit Polyclonal antibody. Positive WB detected in Raji cells. Positive IP detected in Raji cells. Positive FC detected in Raji cells. Positive IHC detected in human tonsillitis tissue, human lymphoma tissue. Observed molecular weight by Western-blot: 33 kDa

Preparation

This antibody was obtained by immunization of CD20 recombinant protein (Accession Number: NM_152867). Purification method: Antigen affinity purified.

Formulation

PBS with 0.1% sodium azide and 50% glycerol pH 7.3.

Storage

Store at -20°C. DO NOT ALIQUOT

Clonality

Polyclonal

Ig Type

Rabbit IgG

Applications

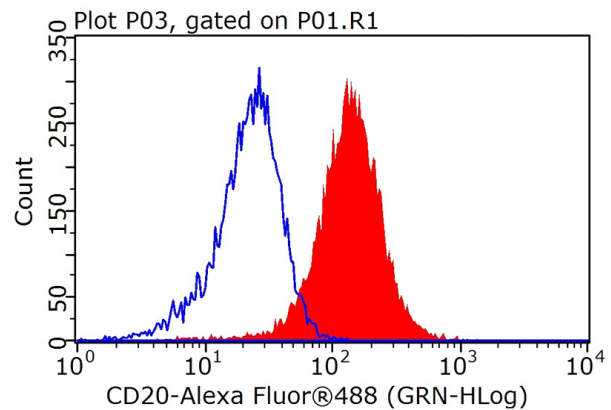
ELISA, WB, IHC, FC, IP

Dilutions

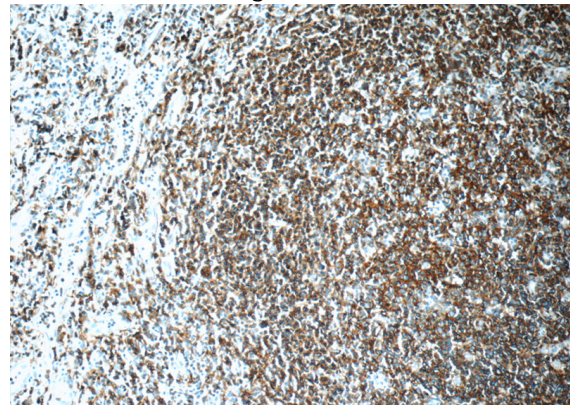
Recommended Dilution:

WB: 1:500-1:5000

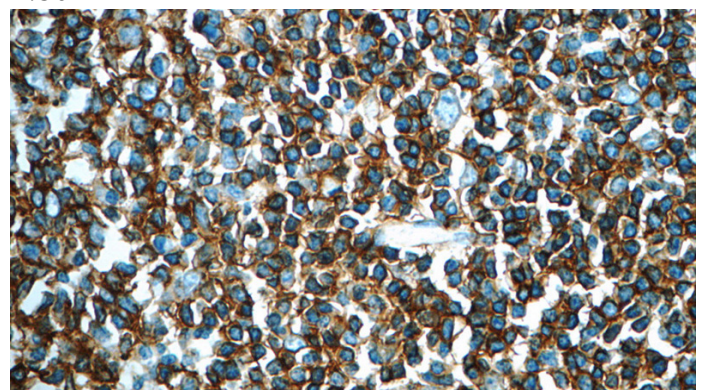
Validations



1X10⁶ Raji cells were stained with 0.2ug MS4A1,CD20 antibody (Catalog No:109005, red) and control antibody (blue). Fixed with 4% PFA blocked with 3% BSA (30 min). Alexa Fluor 488-Goat anti-Rabbit IgG with dilution 1:100.



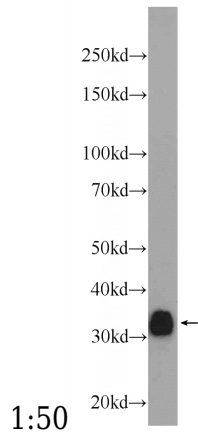
Immunohistochemistry of paraffin-embedded human tonsillitis slide using Catalog No:109005(MS4A1,CD20 Antibody) at dilution of 1:50



CD20 antibody

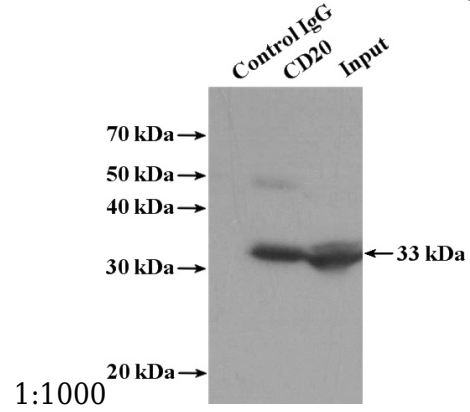
Catalog Number: 109005

Immunohistochemistry of paraffin-embedded human tonsillitis slide using Catalog No:109005(MS4A1,CD20 Antibody) at dilution of



Raji cells were subjected to SDS PAGE followed by

western blot with Catalog No:109005(MS4A1,CD20 Antibody) at dilution of



IP Result of anti-MS4A1,CD20 (IP:Catalog No:109005, 4ug; Detection:Catalog No:109005 1:600) with Raji cells lysate 1440ug.