

# CCL27 antibody

Catalog Number: 109003

## Product name

CCL27 antibody

## Specificity

Human; other species not tested.

## Antibody description

CCL27 Rabbit Polyclonal antibody. Positive IHC detected in human testis tissue, human liver cancer tissue, human liver tissue, human skin cancer tissue, human skin tissue. Positive IF detected in A431 cells.

## Preparation

This antibody was obtained by immunization of Peptide (Accession Number: NM\_006664). Purification method: Antigen affinity purified.

## Formulation

PBS with 0.02% sodium azide and 50% glycerol pH 7.3.

## Storage

Store at -20°C. DO NOT ALIQUOT

## Clonality

Polyclonal

## Ig Type

Rabbit IgG

## Applications

ELISA, IHC, IF

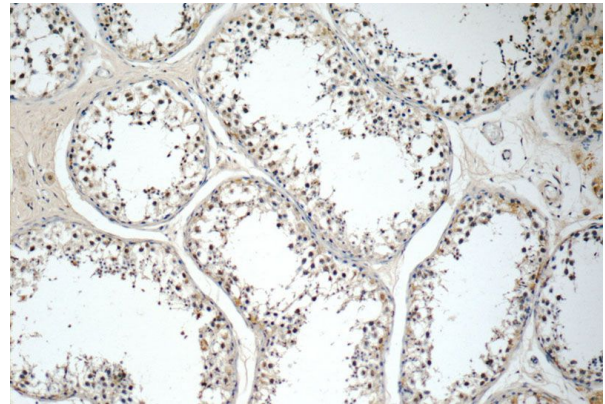
## Dilutions

Recommended Dilution:

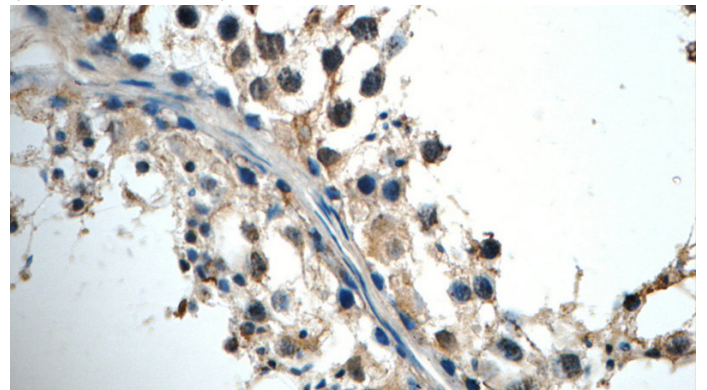
IHC: 1:20-1:200

IF: 1:10-1:100

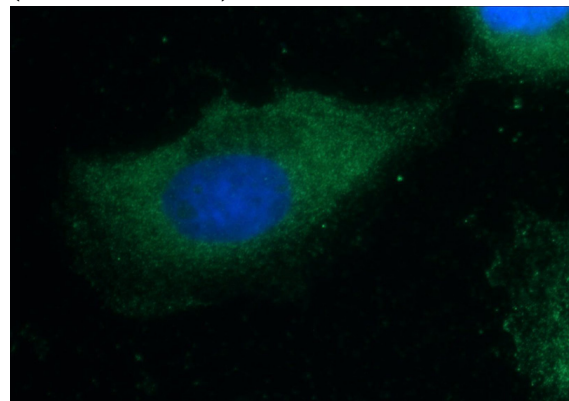
## Validations



Immunohistochemistry of paraffin-embedded human testis tissue slide using Catalog No:109003(CCL27 Antibody) at dilution of 1:50 (under 10x lens)



Immunohistochemistry of paraffin-embedded human testis tissue slide using Catalog No:109003(CCL27 Antibody) at dilution of 1:50 (under 40x lens)



Immunofluorescent analysis of A431 cells using Catalog No:109003(CCL27 Antibody) at dilution of 1:25 and Alexa Fluor 488-conjugated AffiniPure Goat Anti-Rabbit IgG(H+L)