

CCDC51 antibody



Catalog Number: 108978

Product name

CCDC51 antibody

IHC: 1:20-1:200

IF: 1:10-1:100

Specificity

human, mouse, rat; other species not tested.

Antibody description

CCDC51 Rabbit Polyclonal antibody. Positive IHC detected in human ovary. Positive IF detected in HepG2. Positive WB detected in HeLa cells, HepG2 cells, Jurkat cells, K-562 cells. Observed molecular weight by Western-blot: 46kd

Preparation

This antibody was obtained by immunization of CCDC51 recombinant protein (Accession Number: BC004341). Purification method: Antigen affinity purified.

Formulation

PBS with 0.02% sodium azide and 50% glycerol pH 7.3.

Storage

Store at -20°C. DO NOT ALIQUOT

Clonality

Polyclonal

Ig Type

Rabbit IgG

Applications

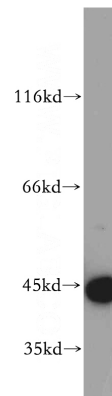
ELISA, WB, IHC, IF

Dilutions

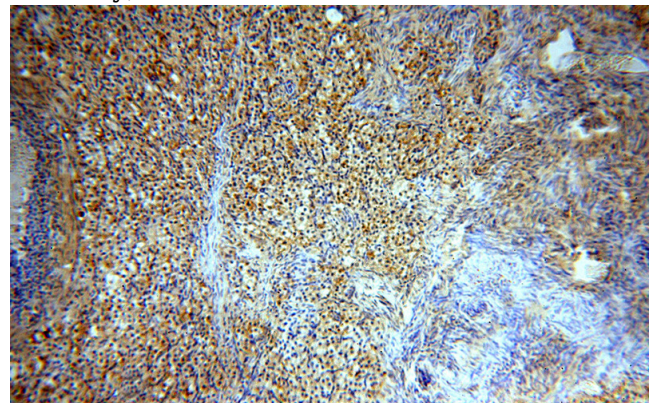
Recommended Dilution:

WB: 1:1000-1:10000

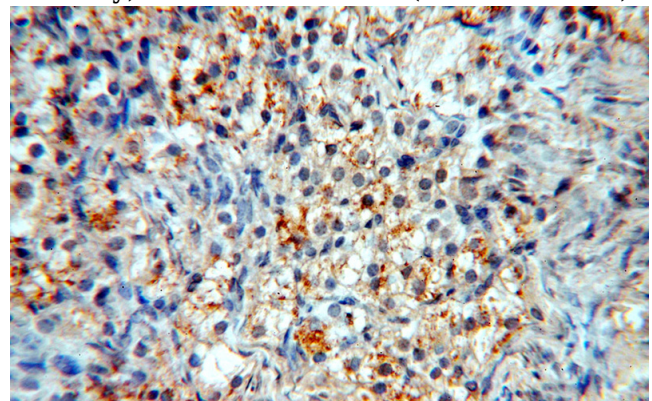
Validations



HeLa cells were subjected to SDS PAGE followed by western blot with Catalog No:108978(CCDC51 antibody) at dilution of 1:500



Immunohistochemical of paraffin-embedded human ovary using Catalog No:108978(CCDC51 antibody) at dilution of 1:100 (under 10x lens)

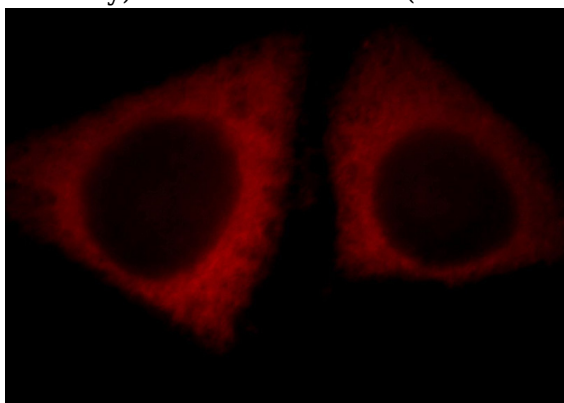


Immunohistochemical of paraffin-embedded human ovary using Catalog No:108978(CCDC51 antibody) at dilution of 1:100 (under 10x lens)

CCDC51 antibody

Catalog Number: 108978

antibody) at dilution of 1:100 (under 40x lens)



Immunofluorescent analysis of HepG2 cells, using CCDC51 antibody Catalog No:108978 at 1:25 dilution and Rhodamine-labeled goat anti-rabbit IgG (red).