

# CCDC50 antibody



Catalog Number: 108977

## Product name

CCDC50 antibody

WB: 1:1000-1:10000

IHC: 1:20-1:200

## Specificity

human, mouse, rat; other species not tested.

## Antibody description

CCDC50 Rabbit Polyclonal antibody. Positive IHC detected in human kidney. Positive WB detected in K-562 cells, human brain tissue, human heart tissue, human placenta tissue, mouse lung tissue, L02 cells. Observed molecular weight by Western-blot: 36-38kd

## Preparation

This antibody was obtained by immunization of CCDC50 recombinant protein (Accession Number: NM\_174908). Purification method: Antigen affinity purified.

## Formulation

PBS with 0.02% sodium azide and 50% glycerol pH 7.3.

## Storage

Store at -20°C. DO NOT ALIQUOT

## Clonality

Polyclonal

## Ig Type

Rabbit IgG

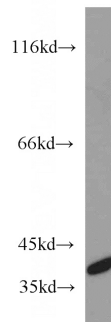
## Applications

ELISA, WB, IHC

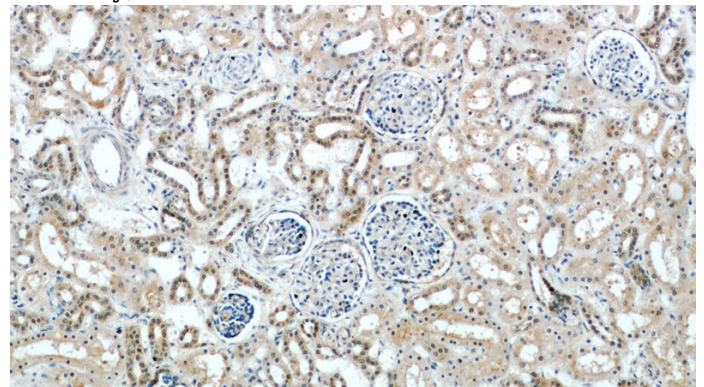
## Dilutions

Recommended Dilution:

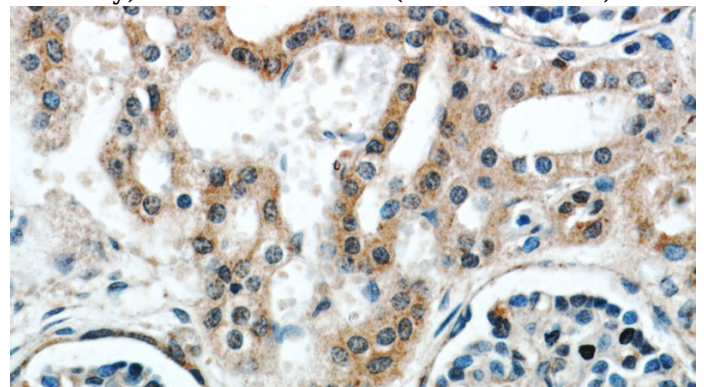
## Validations



K-562 cells were subjected to SDS PAGE followed by western blot with Catalog No:108977(CCDC50 antibody) at dilution of 1:500



Immunohistochemical of paraffin-embedded human kidney using Catalog No:108977(CCDC50 antibody) at dilution of 1:50 (under 10x lens)



Immunohistochemical of paraffin-embedded human kidney using Catalog No:108977(CCDC50 antibody) at dilution of 1:50 (under 40x lens)