

# CCDC25 antibody



Catalog Number: 108969

## Product name

CCDC25 antibody

## Immunogen

[Human CCDC25 Recombinant protein \(GST tag\)](#)

## Specificity

human, mouse, rat; other species not tested.

## Antibody description

CCDC25 Rabbit Polyclonal antibody. Positive WB detected in HeLa cells, Jurkat cells. Positive IF detected in HeLa. Positive IHC detected in human kidney. Observed molecular weight by Western-blot: 24-26kd

## Preparation

This antibody was obtained by immunization of CCDC25 recombinant protein (Accession Number: NM\_001304532). Purification method: Antigen affinity purified.

## Formulation

PBS with 0.02% sodium azide and 50% glycerol pH 7.3.

## Storage

Store at -20°C. DO NOT ALIQUOT

## Clonality

Polyclonal

## Ig Type

Rabbit IgG

## Applications

ELISA, WB, IHC, IF

## Dilutions

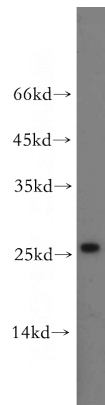
Recommended Dilution:

WB: 1:500-1:5000

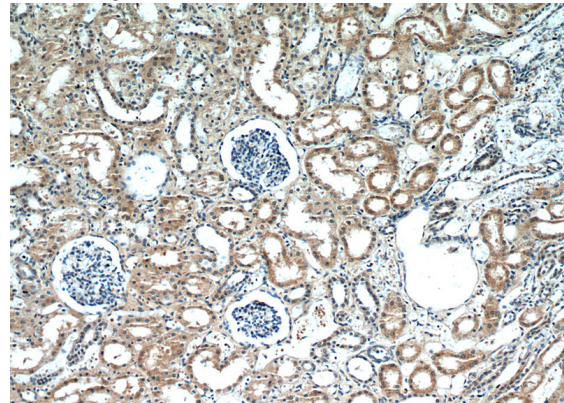
IHC: 1:20-1:200

IF: 1:10-1:100

## Validations



HeLa cells were subjected to SDS PAGE followed by western blot with Catalog No:108969(CCDC25 antibody) at dilution of 1:500

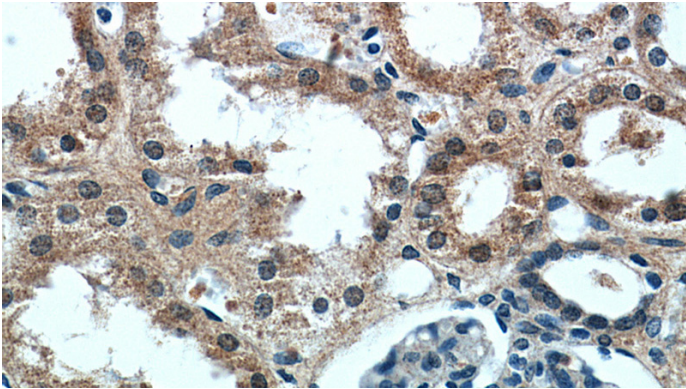


Immunohistochemical of paraffin-embedded human kidney using Catalog No:108969(CCDC25 antibody) at dilution of 1:50 (under 10x lens)

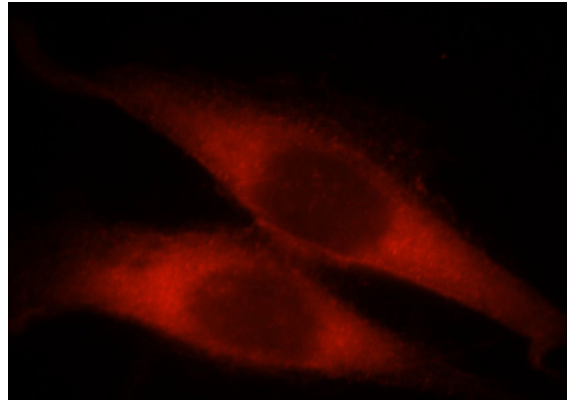
# CCDC25 antibody

Catalog Number: 108969

---



Immunohistochemical of paraffin-embedded human kidney using Catalog No:108969(CCDC25 antibody) at dilution of 1:50 (under 40x lens)



Immunofluorescent analysis of HeLa cells, using CCDC25 antibody Catalog No:108969 at 1:25 dilution and Rhodamine-labeled goat anti-rabbit IgG (red).