

CCDC22 antibody



Catalog Number: 108968

Product name

CCDC22 antibody

Specificity

Human, Mouse, Rat; other species not tested.

Antibody description

CCDC22 Rabbit Polyclonal antibody. Positive WB detected in human brain tissue, mouse lung tissue. Positive IP detected in mouse lung tissue. Observed molecular weight by Western-blot: 71 kDa

Preparation

This antibody was obtained by immunization of CCDC22 recombinant protein (Accession Number: NM_014008). Purification method: Antigen affinity purified.

Formulation

PBS with 0.02% sodium azide and 50% glycerol pH 7.3.

Storage

Store at -20°C. DO NOT ALIQUOT

Clonality

Polyclonal

Ig Type

Rabbit IgG

Applications

ELISA, WB, IP

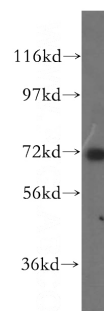
Dilutions

Recommended Dilution:

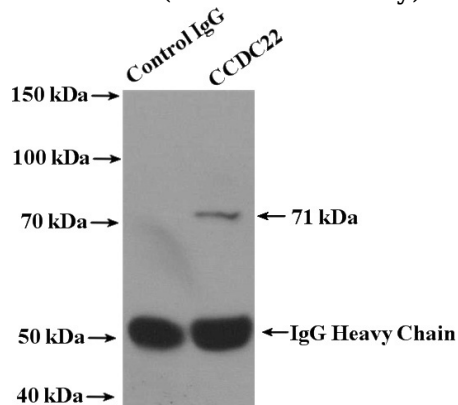
WB: 1:500-1:5000

IP: 1:200-1:2000

Validations



human brain tissue were subjected to SDS PAGE followed by western blot with Catalog No:108968(CCDC22 antibody) at dilution of 1:500



IP Result of anti-CCDC22 (IP:Catalog No:108968, 4ug; Detection:Catalog No:108968 1:600) with mouse lung tissue lysate 3600ug.