

# CCDC158 antibody



Catalog Number: 108966

## Product name

CCDC158 antibody

Recommended Dilution:

WB: 1:500-1:5000

## Immunogen

[Human CCDC158 Recombinant protein \(His tag\)](#)

IP: 1:200-1:2000

IHC: 1:20-1:200

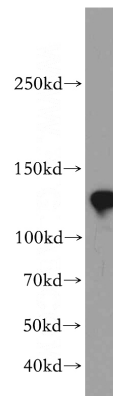
## Specificity

Human, Mouse, Rat; other species not tested.

## Validations

## Antibody description

CCDC158 Rabbit Polyclonal antibody. Positive IHC detected in human kidney tissue, human testis tissue. Positive IP detected in mouse testis tissue. Positive WB detected in mouse testis tissue, human testis tissue. Observed molecular weight by Western-blot: 127-140kd



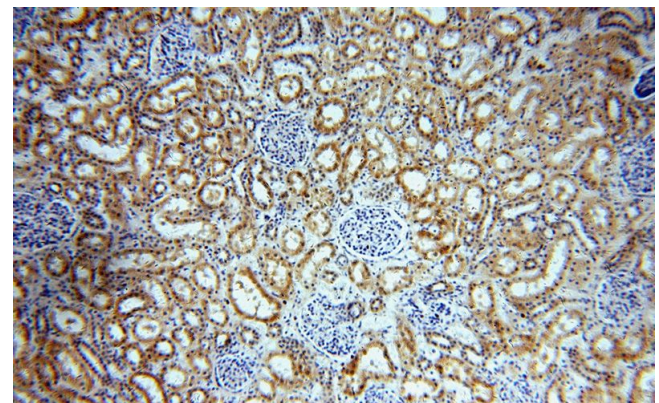
## Preparation

This antibody was obtained by immunization of CCDC158 recombinant protein (Accession Number: BC035224). Purification method: Antigen affinity purified.

mouse testis tissue were subjected to SDS PAGE followed by western blot with Catalog No:108966(CCDC158 antibody) at dilution of 1:500

## Formulation

PBS with 0.02% sodium azide and 50% glycerol pH 7.3.



## Storage

Store at -20°C. DO NOT ALIQUOT

## Clonality

Polyclonal

Immunohistochemical of paraffin-embedded human kidney using Catalog No:108966(CCDC158 antibody) at dilution of 1:100 (under 10x lens)

## Ig Type

Rabbit IgG

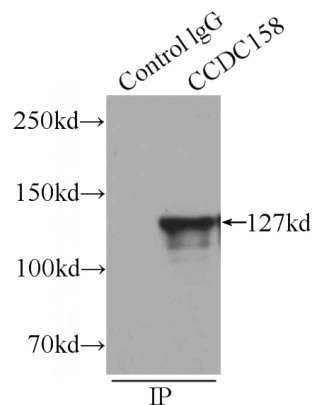
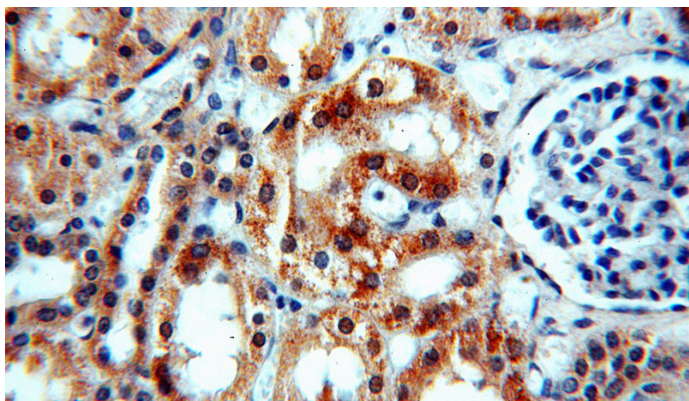
## Applications

ELISA, WB, IHC, IP

## Dilutions

# CCDC158 antibody

Catalog Number: 108966



Immunohistochemical of paraffin-embedded human kidney using Catalog No:108966(CCDC158 antibody) at dilution of 1:100 (under 40x lens)

IP Result of anti-CCDC158 (IP:Catalog No:108966, 4ug; Detection:Catalog No:108966 1:500) with mouse testis tissue lysate 6000ug.