

CCDC153 antibody



Catalog Number: 108965

Product name

CCDC153 antibody

IHC: 1:20-1:200

IF: 1:10-1:100

Specificity

Human, Mouse, Rat; other species not tested.

Antibody description

CCDC153 Rabbit Polyclonal antibody. Positive IF detected in HepG2 cells, Hela cells. Positive IHC detected in human prostate hyperplasia tissue. Positive WB detected in COLO 320 cells, HepG2 cells, human brain tissue, L02 cells. Observed molecular weight by Western-blot: 45-48 kDa

Preparation

This antibody was obtained by immunization of CCDC153 recombinant protein (Accession Number: NM_001033658). Purification method: Antigen affinity purified.

Formulation

PBS with 0.02% sodium azide and 50% glycerol pH 7.3.

Storage

Store at -20°C. DO NOT ALIQUOT

Clonality

Polyclonal

Ig Type

Rabbit IgG

Applications

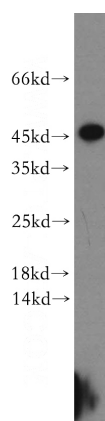
ELISA, WB, IF, IHC

Dilutions

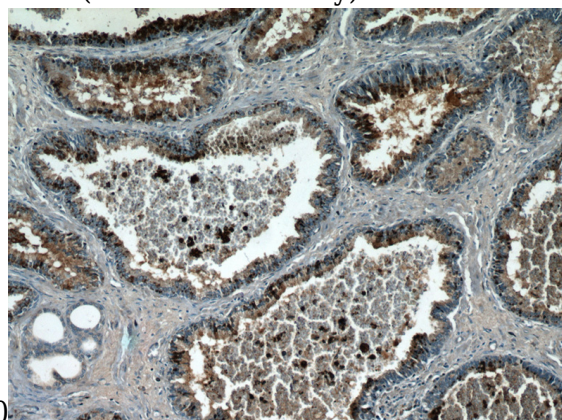
Recommended Dilution:

WB: 1:500-1:5000

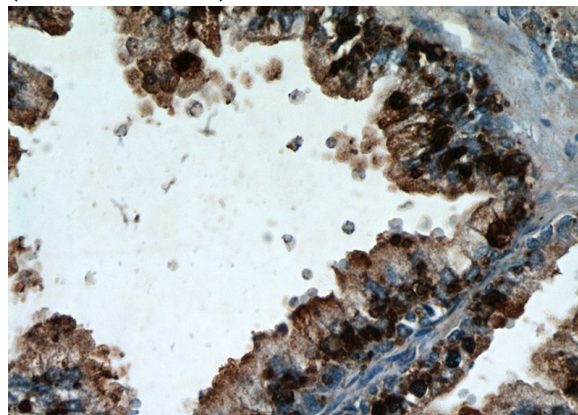
Validations



COLO 320 cells were subjected to SDS PAGE followed by western blot with Catalog No:108965(CCDC153 antibody) at dilution of



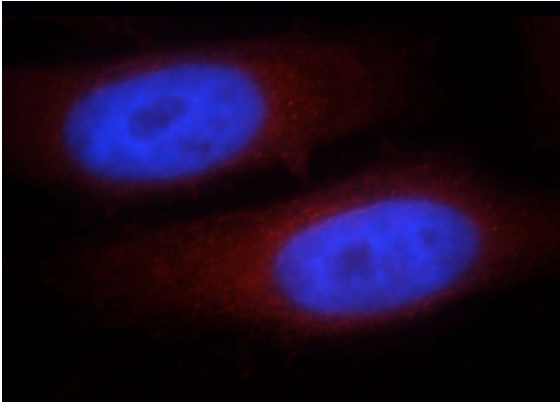
Immunohistochemical of paraffin-embedded human prostate hyperplasia using Catalog No:108965(CCDC153 antibody) at dilution of 1:50 (under 10x lens)



CCDC153 antibody

Catalog Number: 108965

Immunohistochemical of paraffin-embedded human prostate hyperplasia using Catalog No:108965(CCDC153 antibody) at dilution of 1:50 (under 40x lens)



Immunofluorescent analysis of HepG2 cells, using CCDC153 antibody Catalog No:108965 at 1:25 dilution and Rhodamine-labeled goat anti-rabbit IgG (red). Blue pseudocolor = DAPI (fluorescent DNA dye).