

CCDC12 antibody



Catalog Number: 108963

Product name

CCDC12 antibody

Specificity

Human; other species not tested.

Antibody description

CCDC12 Rabbit Polyclonal antibody. Positive WB detected in HeLa cells, Raji cells. Observed molecular weight by Western-blot: 18-25 kDa

Preparation

This antibody was obtained by immunization of CCDC12 recombinant protein (Accession Number: NM_001277074). Purification method: Antigen affinity purified.

Formulation

PBS with 0.1% sodium azide and 50% glycerol pH 7.3.

Storage

Store at -20°C. DO NOT ALIQUOT

Clonality

Polyclonal

Ig Type

Rabbit IgG

Applications

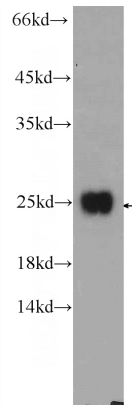
ELISA, WB, IP

Dilutions

Recommended Dilution:

WB: 1:200-1:2000

Validations



HeLa cells were subjected to SDS PAGE followed by western blot with Catalog No:108963(CCDC12 Antibody) at dilution of 1:600