

CCBL1/KAT1 antibody



Catalog Number: 108956

Product name

CCBL1/KAT1 antibody

Specificity

Human, Mouse, Rat; other species not tested.

Antibody description

CCBL1/KAT1 Rabbit Polyclonal antibody. Positive WB detected in mouse kidney tissue, HeLa cells, L02 cells. Observed molecular weight by Western-blot: 48-50 kDa

Preparation

This antibody was obtained by immunization of CCBL1/KAT1 recombinant protein (Accession Number: BC013069). Purification method: Antigen affinity purified.

Formulation

PBS with 0.02% sodium azide and 50% glycerol pH 7.3.

Storage

Store at -20°C. DO NOT ALIQUOT

Clonality

Polyclonal

Ig Type

Rabbit IgG

Applications

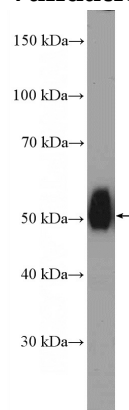
ELISA, WB

Dilutions

Recommended Dilution:

WB: 1:200-1:2000

Validations



mouse kidney tissue were subjected to SDS PAGE followed by western blot with Catalog No:108956(CCBL1 Antibody) at dilution of 1:600