

CBX3 antibody



Catalog Number: 108945

Product name

CBX3 antibody

WB: 1:1000-1:10000

IP: 1:200-1:2000

Specificity

Human, Mouse, Rat; other species not tested.

IHC: 1:20-1:200

IF: 1:20-1:200

Antibody description

CBX3 Rabbit Polyclonal antibody. Positive IF detected in HepG2 cells. Positive IHC detected in human colon cancer tissue. Positive WB detected in HeLa cells, A375 cells, mouse spleen tissue. Positive IP detected in mouse spleen tissue. Observed molecular weight by Western-blot: 22 kDa

Validations

Preparation

This antibody was obtained by immunization of CBX3 recombinant protein (Accession Number: NM_007276). Purification method: Antigen affinity purified.

Formulation

PBS with 0.1% sodium azide and 50% glycerol pH 7.3.

Storage

Store at -20°C. DO NOT ALIQUOT

Clonality

Polyclonal

Ig Type

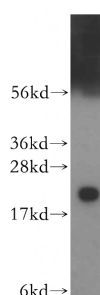
Rabbit IgG

Applications

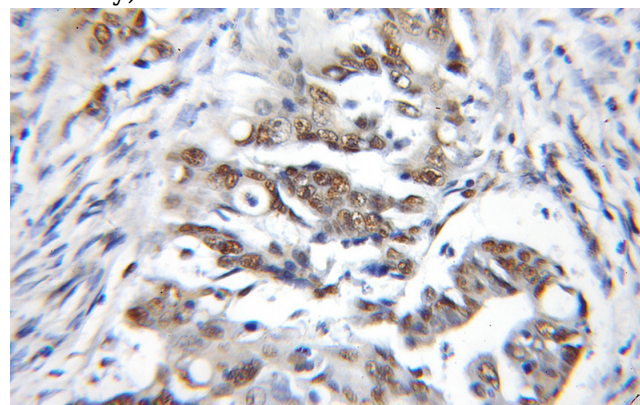
ELISA, WB, IHC, IF, IP

Dilutions

Recommended Dilution:



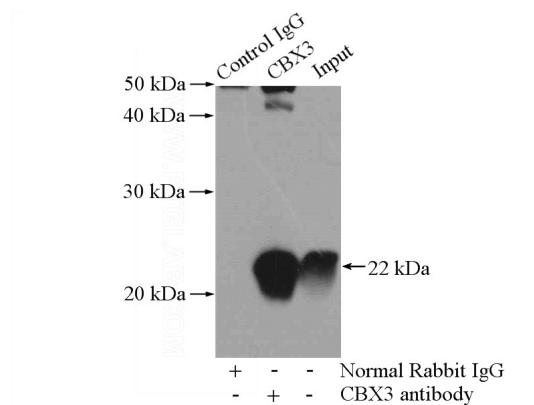
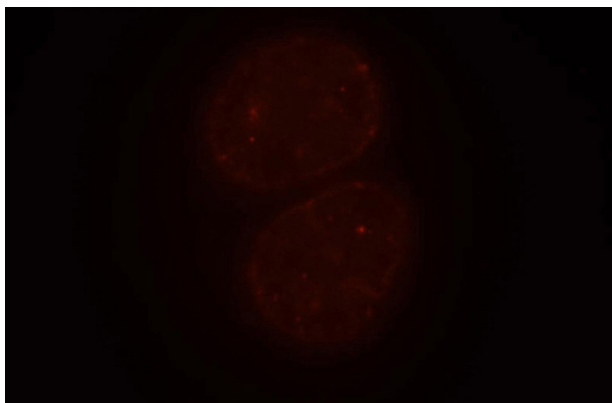
HeLa cells were subjected to SDS PAGE followed by western blot with Catalog No:108945(CBX3 antibody) at dilution of 1:500



Immunohistochemical of paraffin-embedded human colon cancer using Catalog No:108945(CBX3 antibody) at dilution of 1:100 (under 10x lens)

CBX3 antibody

Catalog Number: 108945



Immunofluorescent analysis of HepG2 cells, using CBX3 antibody Catalog No:108945 at 1:50 dilution and Rhodamine-labeled goat anti-rabbit IgG (red).

IP Result of anti-CBX3 (IP:Catalog No:108945, 4ug; Detection:Catalog No:108945 1:500) with mouse spleen tissue lysate 4000ug.