

# CBX1 antibody

Catalog Number: 108943

## Product name

CBX1 antibody

## Specificity

Human, Mouse, Rat; other species not tested.

## Antibody description

CBX1 Rabbit Polyclonal antibody. Positive IP detected in HEK-293 cells. Positive WB detected in HEK-293 cells, A431 cells, HeLa cells, human brain tissue. Observed molecular weight by Western-blot: 25 kDa

## Preparation

This antibody was obtained by immunization of CBX1 recombinant protein (Accession Number: NM\_006807). Purification method: Antigen affinity purified.

## Formulation

PBS with 0.1% sodium azide and 50% glycerol pH 7.3.

## Storage

Store at -20°C. DO NOT ALIQUOT

## Clonality

Polyclonal

## Ig Type

Rabbit IgG

## Applications

ELISA, WB, IP

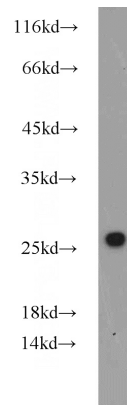
## Dilutions

Recommended Dilution:

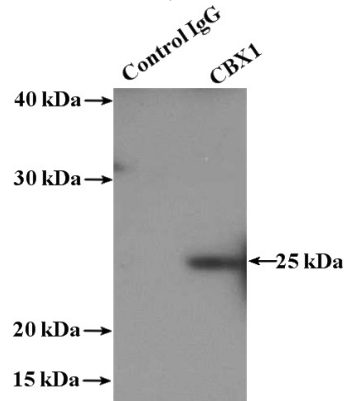
WB: 1:500-1:5000

IP: 1:200-1:2000

## Validations



HEK-293 cells were subjected to SDS PAGE followed by western blot with Catalog No:108943(CBX1 antibody) at dilution of 1:1000



IP Result of anti-CBX1 (IP:Catalog No:108943, 3ug; Detection:Catalog No:108943 1:500) with HEK-293 cells lysate 1480ug.