

# CAPG-Specific antibody

Catalog Number: 108935

## Product name

CAPG-Specific antibody

## Specificity

Human, Mouse, Rat; other species not tested.

## Antibody description

CAPG-Specific Rabbit Polyclonal antibody. Positive WB detected in mouse lung tissue, mouse kidney tissue, U-937 cells. Positive IHC detected in human spleen tissue, human stomach cancer tissue. Observed molecular weight by Western-blot: 43kd

## Preparation

This antibody was obtained by immunization of Peptide (Accession Number: NM\_001747). Purification method: Antigen affinity purified.

## Formulation

PBS with 0.02% sodium azide and 50% glycerol pH 7.3.

## Storage

Store at -20°C. DO NOT ALIQUOT

## Clonality

Polyclonal

## Ig Type

Rabbit IgG

## Applications

ELISA, WB, IHC

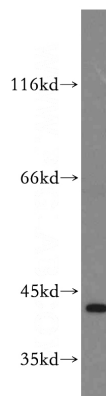
## Dilutions

Recommended Dilution:

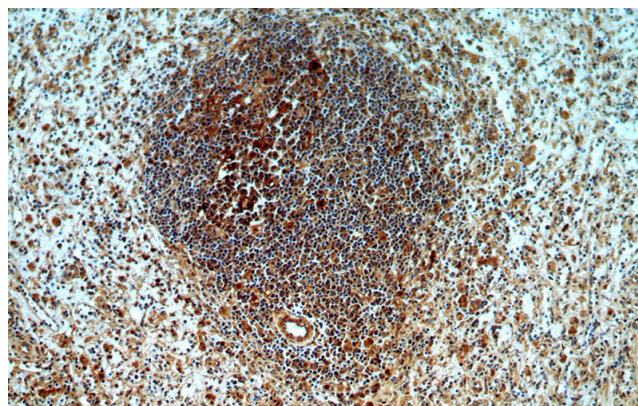
WB: 1:500-1:5000

IHC: 1:20-1:200

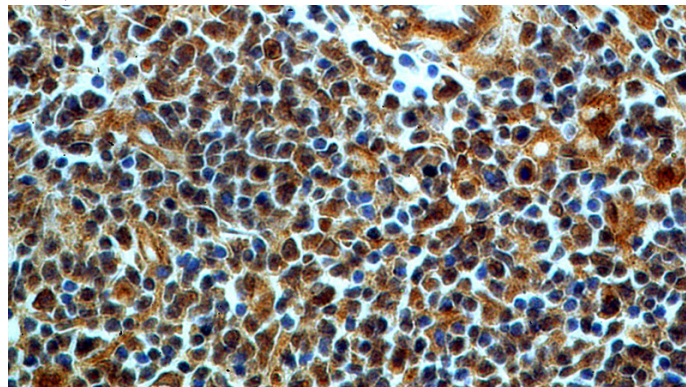
## Validations



mouse lung tissue were subjected to SDS PAGE followed by western blot with Catalog No:108935(CAPG-Specific antibody) at dilution of 1:300



Immunohistochemical of paraffin-embedded human spleen using Catalog No:108935(CAPG-Specific antibody) at dilution of 1:50 (under 10x lens)



Immunohistochemical of paraffin-embedded human spleen using Catalog No:108935(CAPG-

# CAPG-Specific antibody



Catalog Number: 108935

---

Specific antibody) at dilution of 1:50 (under 40x lens)