

# CAP2 antibody

Catalog Number: 108933

## Product name

CAP2 antibody

## Specificity

Human, Mouse, Rat; other species not tested.

## Antibody description

CAP2 Rabbit Polyclonal antibody. Positive IHC detected in human liver cancer tissue, human skeletal muscle tissue. Positive WB detected in human kidney tissue, HepG2 cells, mouse heart tissue, mouse kidney tissue, mouse skeletal muscle tissue, mouse testis tissue, PC-3 cells, rat testis tissue. Positive IP detected in mouse testis tissue. Observed molecular weight by Western-blot: 53 kDa

## Preparation

This antibody was obtained by immunization of CAP2 recombinant protein (Accession Number: NM\_006366). Purification method: Antigen affinity purified.

## Formulation

PBS with 0.02% sodium azide and 50% glycerol pH 7.3.

## Storage

Store at -20°C. DO NOT ALIQUOT

## Clonality

Polyclonal

## Ig Type

Rabbit IgG

## Applications

ELISA, WB, IHC, IP

## Dilutions

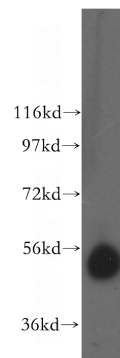
Recommended Dilution:

WB: 1:500-1:5000

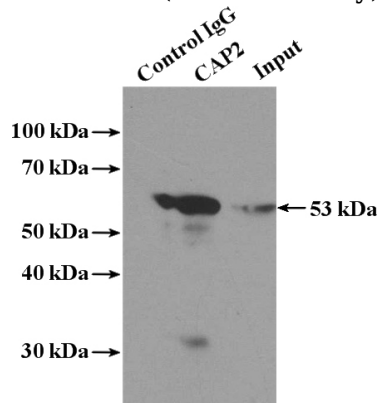
IP: 1:500-1:5000

IHC: 1:20-1:200

## Validations



human kidney tissue were subjected to SDS PAGE followed by western blot with Catalog No:108933(CAP2 antibody) at dilution of 1:400

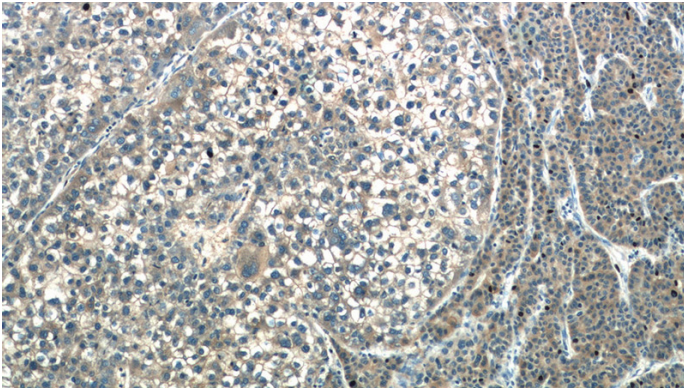


IP Result of anti-CAP2 (IP:Catalog No:108933, 4ug; Detection:Catalog No:108933 1:1000) with mouse testis tissue lysate 4000ug.

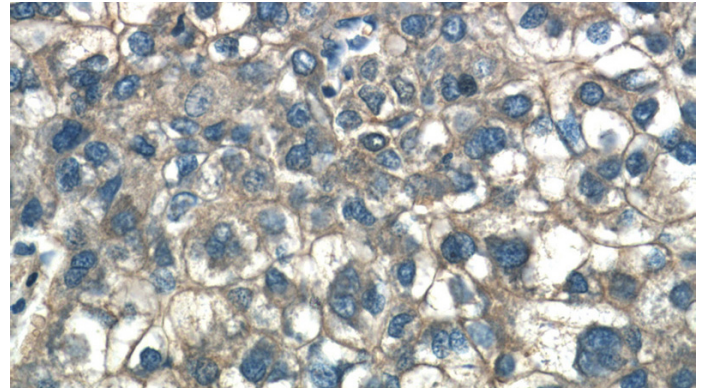
# CAP2 antibody

Catalog Number: 108933

---



Immunohistochemistry of paraffin-embedded human liver cancer tissue slide using Catalog No:108933(CAP2 Antibody) at dilution of 1:50 (under 10x lens)



Immunohistochemistry of paraffin-embedded human liver cancer tissue slide using Catalog No:108933(CAP2 Antibody) at dilution of 1:50 (under 40x lens)