

CAMLG antibody



Catalog Number: 108926

Product name

CAMLG antibody

Specificity

Human, Mouse, Rat; other species not tested.

Antibody description

CAMLG Rabbit Polyclonal antibody. Positive WB detected in Jurkat cells, human testis tissue, mouse brain tissue, mouse testis tissue, rat brain tissue. Observed molecular weight by Western-blot: 36 kDa

Preparation

This antibody was obtained by immunization of CAMLG recombinant protein (Accession Number: NM_001745). Purification method: Antigen affinity purified.

Formulation

PBS with 0.02% sodium azide and 50% glycerol pH 7.3.

Storage

Store at -20°C. DO NOT ALIQUOT

Clonality

Polyclonal

Ig Type

Rabbit IgG

Applications

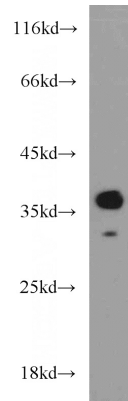
ELISA, WB

Dilutions

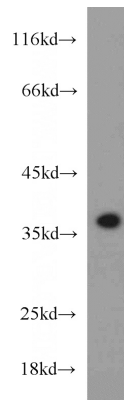
Recommended Dilution:

WB: 1:500-1:5000

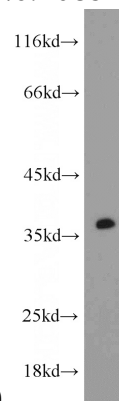
Validations



mouse brain tissue were subjected to SDS PAGE followed by western blot with Catalog No:108926(CAMLG antibody) at dilution of 1:1000



Jurkat cells were subjected to SDS PAGE followed by western blot with Catalog No:108926(CAMLG



antibody) at dilution of 1:1000

rat brain tissue were subjected to SDS PAGE followed by western blot with Catalog No:108926(CAMLG antibody) at dilution of 1:1000