

CaMKII alpha-Specific antibody



Catalog Number: 108915

Product name

CaMKII alpha-Specific antibody

IP: 1:500-1:5000

IHC: 1:20-1:200

Specificity

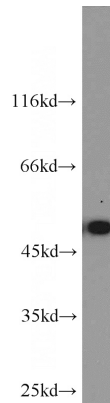
Human; other species not tested.

IF: 1:20-1:200

Antibody description

CaMKII alpha-Specific Rabbit Polyclonal antibody. Positive IHC detected in human brain tissue. Positive IF detected in SH-SY5Y cells. Positive IP detected in HEK-293 cells. Positive WB detected in HEK-293 cells. Observed molecular weight by Western-blot: 50 kDa

Validations



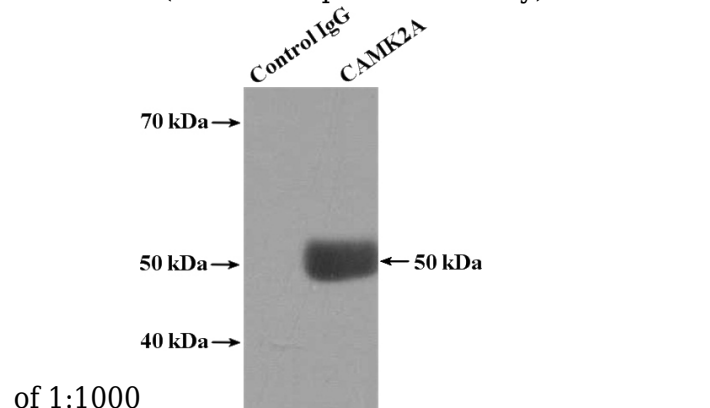
Preparation

This antibody was obtained by immunization of Peptide (Accession Number: NM_015981). Purification method: Antigen affinity purified.

HEK-293 cells were subjected to SDS PAGE followed by western blot with Catalog No:108915(CAMK2A-Specific antibody) at dilution

Formulation

PBS with 0.1% sodium azide and 50% glycerol pH 7.3.



Storage

Store at -20°C. DO NOT ALIQUOT

Clonality

Polyclonal

Ig Type

Rabbit IgG

Applications

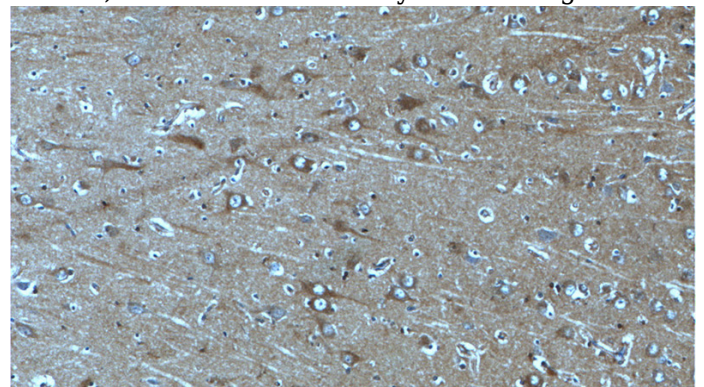
ELISA, WB, IHC, IP, IF

Dilutions

Recommended Dilution:

WB: 1:500-1:5000

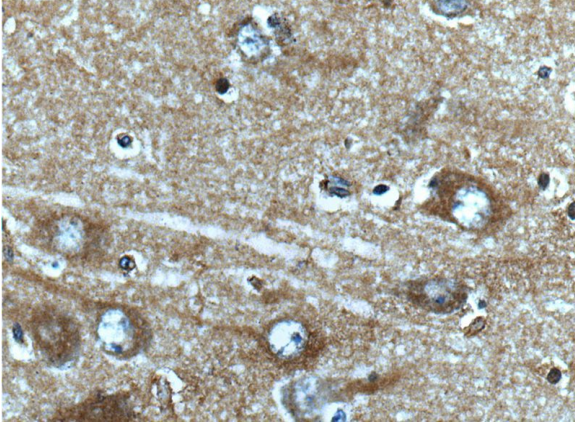
IP Result of anti-CAMK2A-Specific (IP:Catalog No:108915, 4ug; Detection:Catalog No:108915 1:1000) with HEK-293 cells lysate 1480ug.



CaMKII alpha-Specific antibody

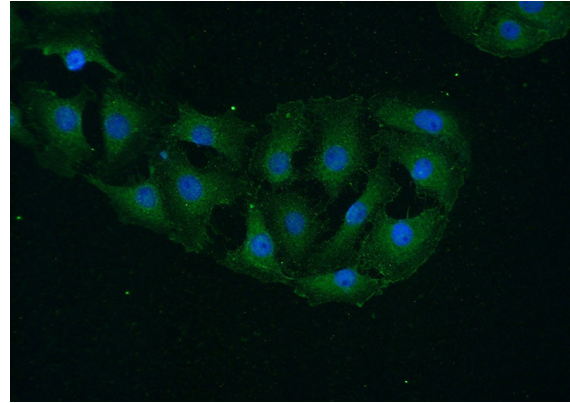
Catalog Number: 108915

Immunohistochemistry of paraffin-embedded human brain tissue slide using Catalog No:108915(CAMK2A-Specific Antibody) at dilution of 1:50 (under 10x lens)



Immunohistochemistry of paraffin-embedded human brain tissue slide using Catalog

No:108915(CAMK2A-Specific Antibody) at dilution of 1:50 (under 40x lens)



Immunofluorescent analysis of (-20oc Ethanol) fixed SH-SY5Y cells using Catalog No:108915(CAMK2A-Specific Antibody) at dilution of 1:50 and Alexa Fluor 488-conjugated AffiniPure Goat Anti-Rabbit IgG(H+L)